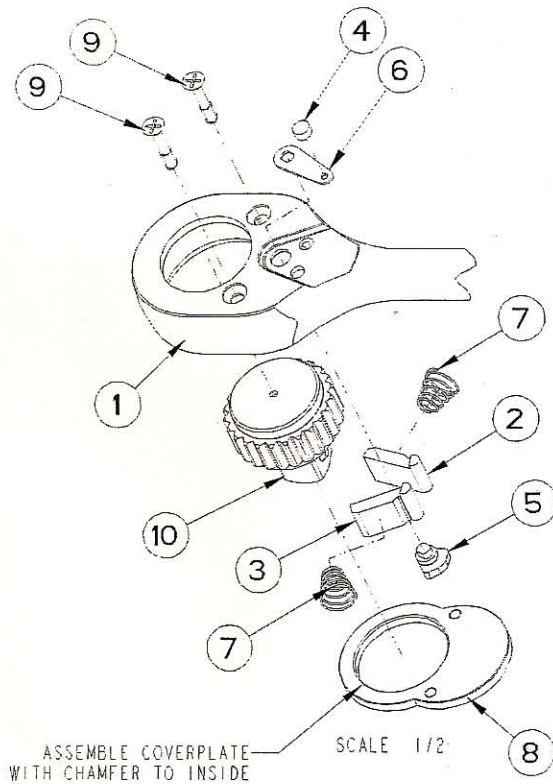


ZR26



10	1	DRIVE WHEEL ASSEMBLY
9	2	SCREW, 12-24 FLAT HEAD WITH TYPE 2 RECESS
8	1	COVER PLATE
7	2	SPRING, RATCHETING DOGS
6	1	REVERSE LEVER
5	1	REVERSE CAM
4	1	REVERSE BUTTON
3	1	RIGHT HAND DOG
2	1	LEFT HAND DOG
1	1	FINISHED RATCHET BODY
ITEM NO	QTY	DESCRIPTION

NOTES:

1. LUBRICATE MECHANISM WITH 10 WEIGHT ISO 32 OIL.
2. TORQUE SCREWS (ITEM 9) TO 95 IN/LBS WITH PHILLIPS DRIVER POINT SIZE No. 3. INSURE DRIVE WHEEL ROTATES FREELY AND ASSEMBLY HAS STRONG AUDIBLE CLICK AS DOGS ENGAGE WHEEL TEETH. SCREWS TO BE FLUSH OR PROTRUDE NO MORE THAN .060 THRU COVER PLATE.
3. SMALL END OF SPRING TO REST AGAINST DOG.

TWZ-RK

3/4" REPAIR KIT

