

RELEASE NOTES

Version 2.10.0.14

ET6200 / ET6201

OVERVIEW

This software release features new enhancements for Asian, Domestic and European vehicles. It contains coverage for vehicles spanning more than 10 model years that enable you to fix more cars and fix them faster. Not only did we add scan tool functions, we also increased the amount of on-tool technical information to make diagnosing today's complex vehicles easier.

NEW COVERAGE HIGHLIGHTS

- TPMS registration coverage for GM, Chrysler/Jeep, Nissan/Infiniti, Toyota/Lexus, Hyundai, Kia, Mazda, Mitsubishi, Subaru
- TPMS quick reference information for GM, Mazda, Nissan, Toyota, Audi, Land Rover, Mercedes Benz and Volkswagen
- New brake pad replacement functions for Ford, Volkswagen, Audi and Hyundai
- Added driver assist and adaptive cruise functions and calibrations for Honda, Kia, Audi, Volkswagen and Hyundai
- Expanded coverage for Volkswagen systems 2008-2015
- Expanded coverage for Audi systems 2008-2015
- Increased our industry-leading diesel coverage, especially on Ford and GM engines
- All System DTC Clear is now available after running an "All System DTC Scan" or "Automated System Test"

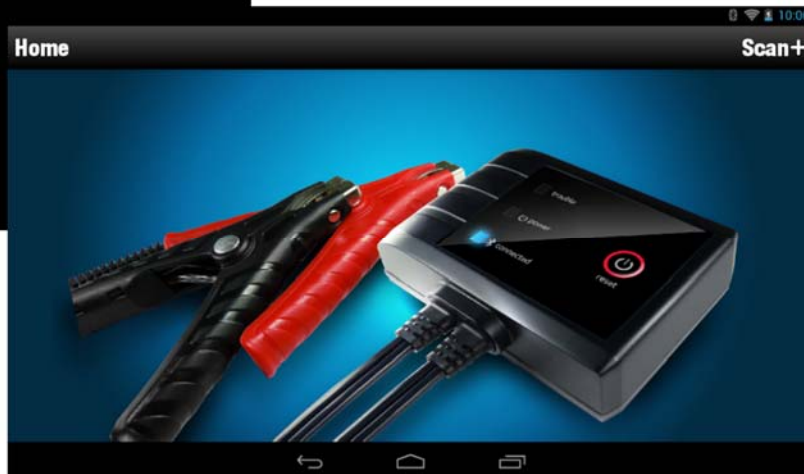
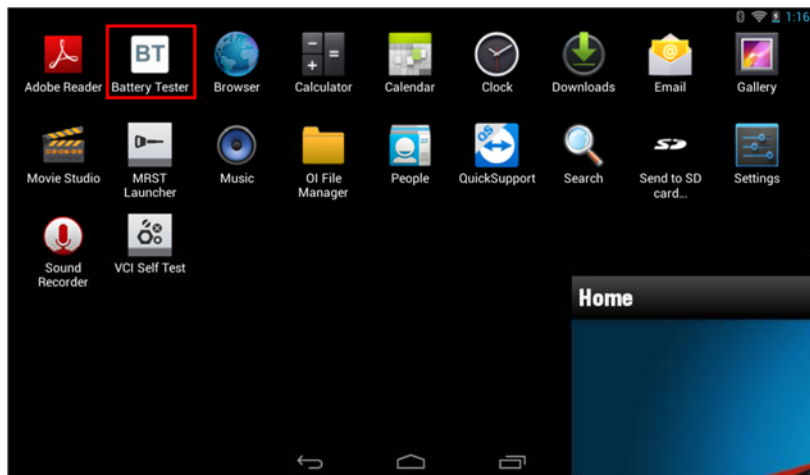
NEW ET3914 BATTERY AND STARTING / CHARGING SYSTEMS TESTER

The new ET3914 Bluetooth Battery Tester can be used with the Mac Tools Scout.

- Test automotive batteries and create health reports
- Works on 6V and 12V Regular Flooded, Enhanced Flooded, AGM, EV and Start-Stop batteries
- 12V/24V charging/starting systems tests
- Email test results (Stores 2,000 test records)
- Test batteries with as little as 1.5V
- Three LED indicators (Blue: Connected, Green: Power, Red: Trouble)
- 20-inch cable with durable clamps



A battery tester application is added in the “All Apps” menu as shown below



NEW VIN DECODER DATABASE

There is a new Search by VIN entry screen available on the Vehicle Bay. Performs basic verification checks on your inputted VIN:



NEW VEHICLE COVERAGE

- **Mercedes Benz** – New coverage for 2015MY vehicles and systems
- **Volkswagen/Audi** – New coverage for 2014-2015MY vehicles and systems
- **Volkswagen/Audi** – Expanded coverage for UDS protocol systems 2008-2013
- **Ford** – New coverage for brake pad replacement test
- **Ford** – Expanded coverage for high pressure fuel system test, low pressure fuel leak-down test, MAF sensor contamination test
- **TPMS** – Expanded coverage and improvements for Tire Pressure Sensor Registration for GM, Chrysler/Jeep, Nissan/Infiniti, Toyota/Lexus, Hyundai, Kia, Mazda, Mitsubishi, Subaru
- **New Systems** – 2,878
- **New Vehicle-ECU Combinations** – 11,891
- **New Adjustment type tests** – 217
- **New Actuation type tests** – 2,430
- **Updated Diagnostic Information for the following:**
 - Data item operating ranges for 2015MY Mitsubishi
 - TPMS quick reference information for GM, Mazda, Nissan, Toyota, Audi, Land Rover, Mercedes Benz and Volkswagen

NEW COVERAGE – USA DOMESTIC

Chrysler/Jeep Coverage

Five new adjustment type special tests including:

- Engine/PCM - actuation of mixture adaptation, enable / disable vehicle features, snorkel output test

One new actuation type special tests including:

- Instrument cluster - vehicle theft alarm

Special test improvements:

- 2004 Ram ABS - improved set pinion factor
- 2001 Dakota 5.9L engine – improved CAM sync test



Ford Coverage

New coverage for brake pad replacement test

Expanded coverage for high pressure fuel system test, low pressure fuel leak-down test, MAF sensor contamination test

Five new adjustment type special tests including:

- Brakes/ABS - brake fluid replacement - without power bleeder, brake pad replacement, brake system actuation control unit check, brake system air bleed check, service bleeding including brake fluid replacement

31 new actuation type special tests including:

- Engine/PCM - DC to DC converter enable, desired engine cooling fan speed, engine running fuel pressure test, heater pump control relay, high pressure fuel system test, low pressure fuel leak-down test, MAF sensor contamination test, motor electronics coolant pump
- Instrument cluster - voltmeter pointer placement command
- Others - remote function actuator passenger door(s) unlock

Special test improvements:

- 2006 Escape Hybrid ABS bleed
- 2001 Expedition reprogram keys

General Motors / Saturn Coverage

26 new adjustment type special tests including:

- Engine/PCM - ambient air temperature calculation reset, oil life reset
- Transmission - trans. oil life reset
- Brakes/ABS - automated bleed, automated brake bleed, steering wheel angle sensor centering, yaw rate sensor recalibration
- Tire Pressure Monitor/RCDLR - tire pressure sensor registration, tire pressure sensors learn
- Transfer case - reset clutch over-temp counter
- Body control - brake pedal position sensor calibration, CTD operation, door lock operation, fob feedback preferences, setup SDM part number in BCM
- Others – digital radio DRR setup

101 new actuation type special tests including:

- Engine/PCM - auxiliary coolant pump relay, cylinder power balance, EGR valve, EVAP purge/seal, fuel injector balance, fuel pressure control, injector enable/disable
- ABS/Parking brake - disable TIM, right front inlet valve solenoid
- TPMS - tire sensor learn information
- Transfer case - clutch control, clutch coupling request, clutch return



- Climate/HVAC - blower motor, defrost mode, left mix motor, mode door position, right mix motor
- Body control - lamp and buzzer/warning tests, headlight tests, door lock tests, wiper/washer tests
- Seat – memory seat tests for lumbar, position and recline

Special test improvements:

- 2013 Yukon XL 5.3L PCM
- 2013 Silverado 2500 6.6L PCM –reductant heater tests
- 2012 Acadia 3.6L PCM –injector balance test
- 2011 Traverse –passenger presence reset test
- 2010 Terrain 2.4L PCM –power balance test
- 2009 Avalanche transfer case –engage front axle test
- 2009 Vue 3.5/3.6L PCM –transmission reset adapts test
- 2008 Acadia 3.6L PCM - EVAP tests
- 2008 CTS 3.6L PCM - idle relearn test
- 2008 Suburban 5.3L PCM - fuel composition test

Updated diagnostic information for the following:

- TPMS quick reference information

NEW COVERAGE – USA ASIAN

Honda/Acura Coverage

Eight new adjustment type special tests including:

- Driver assist - camera aiming tests
- Others - adaptive cruise control tests

Three new actuation type special tests including:

- Others - integrated driver assist tests for ACC indicator light, ACC relay, CMBS brake

Other improvements:

- 2002 Civic ABS - reading DTCs



Hyundai Coverage

19 new adjustment type special tests including:

- Engine/PCM - auto detected configuration reset, PCM auto detection reset, reset adaptive values, TEC learn, TPS min learnt Reset, VCM learning, write VIN
- ABS - auto detected configuration reset
- Driver assist - camera aiming tests, BSD radar calibration

209 new actuation type special tests including:

- Engine/PCM – A/C clutch and compressor tests, cam phaser tests, EVAP tests, change oil lamp, CKP CMP signal test, cooling fan tests, CVVT test, ETC motor, fuel pressure tests, fuel pump tests, injector tests, ignition coil tests, O2 sensor heater tests, oil control valve tests, variable intake manifold tests
- ABS/brakes - DBC/HAC brake lamp relay, electric shuttle valve, inlet and outlet valve tests, motor test, TCS valve tests
- Electric parking brake - actuator control apply, actuator control release, lamp tests, maintenance mode apply and release tests
- Others - tests for pre-safe seat belt, assist door module, seat lumbar bolster, driver door module

Kia Coverage

12 new adjustment type special tests including:

- Engine/PCM - auto detected configuration reset, PCM auto detection reset, reset adaptive values, TEC learn, VCM learning, write VIN
- Driver assist - camera aiming tests

131 new actuation type special tests including:

- Engine/PCM – A/C compressor tests, cam phaser tests, EVAP tests, change oil lamp, CKP CMP signal test, cooling fan tests, CVVT test, cylinder power balance, ETC motor, fuel pressure tests, fuel pump tests, injector tests, ignition coil tests, O2 sensor heater tests, oil control valve tests, variable intake manifold tests
- ABS/brakes - inlet and outlet valve tests
- Others - tests for assist door module, driver door module

Mazda Coverage

Five new adjustment type special tests including:

- Brakes/ABS - brake fluid replacement - without power bleeder, brake pad replacement, brake system actuation control unit check, brake system air bleed check, service bleeding including brake fluid replacement

Three new actuation type special tests including:

- Engine/PCM - DC to DC converter enable, heater pump control relay, motor electronics coolant pump

Updated diagnostic information for the following:

- TPMS quick reference information

Mitsubishi Coverage

Three new adjustment type special tests including:

- TPMS - tire pressure sensor registration
- Instrument cluster - maintenance reset

Updated diagnostic information for the following:

- Data item operating ranges for 2015MY

Nissan/Infiniti Coverage

Four new adjustment type special tests including:

- TPMS - tire pressure sensor registration
- Body - automatic lock setting, door lock/unlock setting, room lamp timer setting

46 new actuation type special tests including:

- AWD/transfer case – left solenoid, right solenoid
- ABS/brakes - DAB indicator light, ECB solenoid tests, pre-crash brake OFF light, TPMS warning light
- Suspension – active trace control display tests, brake actuator tests, master warning active
- Body control - lamp and buzzer/warning tests, door lock tests

Special test improvements:

- 2008 Sentra TPMS

Updated diagnostic information for the following:

- TPMS quick reference information

Subaru Coverage

One new adjustment type special tests including:

- TPMS - tire pressure sensor registration

Six new actuation type special tests including:

- Engine/PCM - activate the starter cut relay, fuel pump duty control
- Transmission - activate the starter cut relay, fuel pump duty control
- ABS - abs solenoid, sport mode lamp
- Instrument cluster/meter - VSC indicator lamp
- Climate (HVAC) - inside and outside change

Toyota/Lexus Coverage

207 new actuation type special tests including:

- Engine/PCM – EGR tests, fuel pump tests, fuel pressure tests, ISC step position
- ABS – lamp tests, ABS solenoid, ECB solenoid tests, signal check
- Instrument cluster - lamp tests, buzzer tests
- Climate (HVAC) - air purifier mode, assist fan, BATT cool down servo TARG PLS, inside and outside change
- Suspension - RR solenoid 1, signal check, stabilizer check
- Body control - lamp and buzzer/warning tests, mirror tests
- Doors - door lock/unlock tests, window tests, mirror tests
- Others – smart key tests

Updated diagnostic information for the following:

- TPMS quick reference information

NEW COVERAGE – USA EUROPEAN

Audi Coverage

New coverage for 2014-2015MY vehicles and systems

Expanded coverage for UDS protocol systems 2008-2013

Added coverage for 1,319 new systems

Added coverage for 5,839 new vehicle-ECU combinations

59 new adjustment type special tests including:

- Engine/PCM - boost pressure actuator basic adjustment, camshaft timing control (B1) inlet, compressor control flap basic setting, intake camshaft adjustment bank 1, lambda sensor ageing tests, prime fuel pump, throttle valve basic setting
- ABS/brakes - brake pad replacement step 1, brake pad replacement step 2, EMF opening mode adjustment
- AWD/transfer case - reset adaption value
- Climate control/HVAC - air quality sensor adjustment, auxiliary heating configuration without CAN, auxiliary heating continued heating time setting, basic setting, compressor run-in time adaption, front and rear control motor basic settings, front left seat heating memory function setting, front right seat heating memory function setting, reset all counters, write configuration
- Steering - reset adaptation parameters
- Others – park assist tone/acoustic tests, parking aid deactivation speed, write configuration



1,214 new actuation type special tests including:

- Engine/PCM - actuator for camshaft adjustment, air condition compressor activation, all radiator cooling fans, camshaft POS actuator tests, charge motion valve tests, compression test, coolant tests, ECM/PCM power relay, EGR tests, EVAP tests, fan control tests, fuel injector tests, fuel pressure regulator tests, fuel pump relay, gearbox coolant valve, glow plug control module 1, idle speed adjustment, injector tests, oil pressure valve, SCR heating tests, secondary air injection tests, turbo charger control valve, waste gate solenoid
- Hybrid - charging connector A and B tests, coolant pump control HV battery, cooling valve 1 high voltage battery
- Transmission – gear oil cooling valve, open converter clutch, shift lock, lock solenoids for selector lever, parking lock solenoid test, shift lock actuator transversal test, shift lock solenoid test
- ABS/brakes – lamp tests, ABS return pump actuation, attaching brake pads, hydraulic pump, inlet and outlet valve tests, parking brake motors, wheel speed sensor supply
- Transfer case - Haldex transmission activation, front axle torque request test
- Suspension - accumulator pressure test, compressor relay, damper tests, lower vehicle tests, pressure build-up, pressure reduction
- Instrument cluster - lamp tests, buzzer tests, segment test
- Climate (HVAC) - air condition compressor activation, air conditioner performance test, flap door tests, EMC mode flap control motors test, seat heater tests, positioning motor tests, segment test
- Body – lamp/light tests, window tests, mirror tests, door lock tests
- Doors - door lock/unlock tests, window tests, mirror tests
- Others – tests for adaptive cruise control, multi-contour seat, headlight regulation, ACC/start AUTH (05), amplifier module, radio (56), can gateway (19), electronic roof control

Updated diagnostic information for the following:

- TPMS quick reference information

BMW/Mini Coverage**Four new adjustment type special tests including:**

- ABS/brakes – parking brake installation mode activate and deactivate, installation mode
- Climate (HVAC) - calibrate stepper motors
- Other – tailgate lift activate/deactivate transportation mode

62 new actuation type special tests including:

- Engine/PCM - fuel injector off test, VVT tests
- Climate (HVAC) – AC control panel button tests, activate compressor clutch, control the blower, flap motor tests, illumination tests, seat heater button tests

Land Rover Coverage

One new actuation type special tests including:

- Body control - passenger door(s) unlock

Updated diagnostic information for the following:

- TPMS quick reference information

Mercedes Benz

New coverage for 2015MY vehicles and systems

Added coverage for 535 new systems

Added coverage for 4,642 new vehicle-ECU combinations

15 new adjustment type special tests including:

- Engine/PCM - actuation of mixture adaptation, ECU reset
- Transmission - ECU reset
- ABS/brakes - ECU reset, reset steering angle calibration
- Safety/airbag - ECU reset
- Suspension - ECU reset
- Others – door control adjust mirror tests, ECU reset

112 new actuation type special tests including:

- Engine/PCM - charge air cooler - circulation pump, fuel injector tests, fuel pump, heating system shutoff
- ABS/brake – BAS Brake assist test, solenoid valve tests, power steering solenoid valve test
- Instrument cluster - lamp tests, buzzer tests, segment test
- Climate (HVAC) - blower motor
- Suspension - central accumulator valve, compressor relay, damping valve tests, raise / lower suspension tests, single amplifiers drain valve
- Body control - lamp and buzzer/warning tests
- Doors - door lock/unlock tests, window tests, mirror tests
- Others – tests for Parktronic, ELEC Seat ADJ FR, Battery Sensor, System Diagnosis

Special test improvements:

- 2007 ML350 DOOR/WINDOW - window open/close tests
- 2007 ML350 DOOR/WINDOW - de-normalization

Other improvements:

- 2002 C320 airbag



Updated diagnostic information for the following:

- TPMS quick reference information

Smart Coverage

One new adjustment type special tests including:

- Safety/airbag - ECU reset

Volkswagen Coverage

New coverage for 2014-2015MY vehicles and systems

Expanded coverage for UDS protocol systems 2008-2013

Added coverage for 1,024 new systems

Added coverage for 1,410 new vehicle-ECU combinations

49 new adjustment type special tests including:

- Engine/PCM - lambda sensor ageing tests, prime fuel pump, throttle valve basic setting
- ABS/brakes - brake pad replacement step 1, brake pad replacement step 2
- AWD/transfer case - reset adaption value
- Climate control/HVAC - air quality sensor adjustment, auxiliary heating configuration without CAN, auxiliary heating continued heating time setting, basic setting, compressor run-in time adaption, front and rear control motor basic settings, front left seat heating memory function setting, front right seat heating memory function setting, reset all counters, write configuration
- Steering - reset adaptation parameters
- Others – park assist tone/acoustic tests, parking aid deactivation speed, write configuration

501 new actuation type special tests including:

- Engine/PCM - air condition compressor activation, camshaft POS actuator tests, charge motion valve tests, compression test, coolant tests, ECM/PCM power relay, EGR tests, EVAP tests, fan control tests, fuel injector tests, fuel pressure regulator tests, fuel pump relay, gearbox coolant valve, glow plug control module 1, injector tests, oil pressure valve, SCR heating tests, secondary air injection tests, turbo charger control valve, waste gate solenoid
- Hybrid - coolant pump control HV battery, cooling valve 1 high voltage battery, fan control tests
- Transmission – gear oil cooling valve, open converter clutch, shift lock, lock solenoids for selector lever, parking lock solenoid test, shift lock actuator transversal test, shift lock solenoid test
- ABS/brakes – lamp tests, hydraulic pump, parking brake tests
- Transfer case - Haldex transmission activation
- Suspension - damper tests, pressure reduction
- Instrument cluster - lamp tests, buzzer tests, segment test

- Climate (HVAC) - air condition compressor activation, air conditioner performance test, flap door tests, EMC mode flap control motors test, seat heater tests, positioning motor tests, segment test
- Body – lamp/light tests, window tests, mirror tests, door lock tests
- Doors - door lock/unlock tests, window tests, mirror tests
- Others – tests for adaptive cruise control, headlight regulation, ACC/start AUTH (05), amplifier module, radio (56), CAN gateway (19), electronic roof control

Other improvements:

- 2004 Jetta radio - improved issues reading DTCs

Updated diagnostic information for the following:

- TPMS quick reference information

UPDATED REPORT LAYOUTS

The reports have been updated to be made easier to read and print. Additionally, you will see that the date/time stamp are now included on all reports and in instances where the VIN is read, the VIN is also displayed.

HTMLViewer
5:24

ASDTC

Generated: 05/03/2017 04:59 PM

VEHICLE INFORMATION

2010 GMC Acadia SL 3.6	
VIN	1GKLRKED5AJ999999
Primary Controller	ENGINE

reminder : only controllers with the same diagnostic connection type as the primary controller selected will be evaluated in this report. be aware that if vehicle has multiple diagnostic connections that then a different cable connection may be required to read certain controllers.

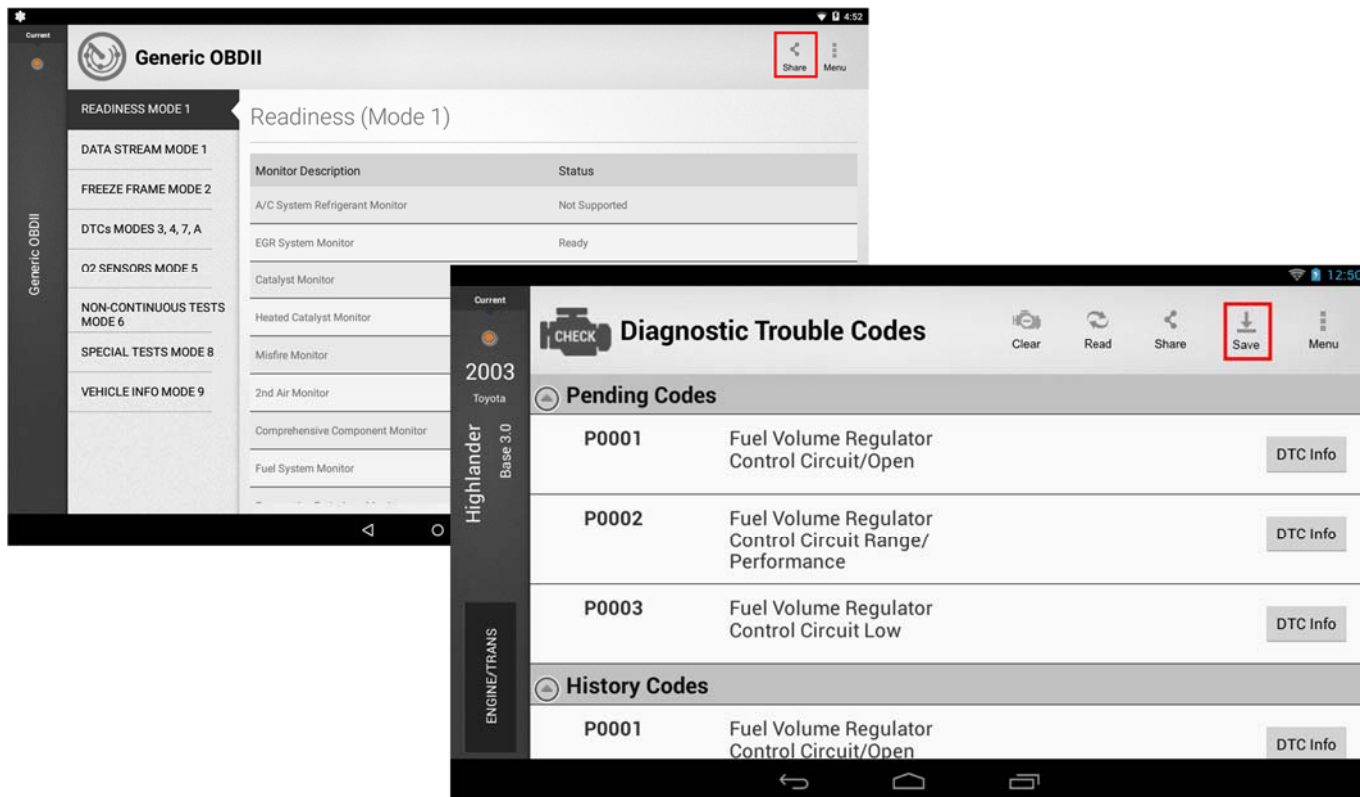
DTCS

Primary Controller ENGINE

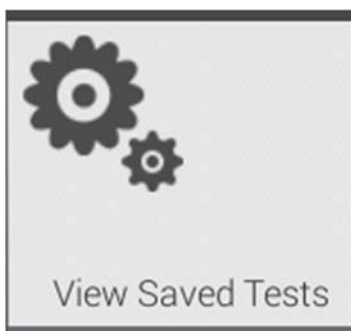
P0008-00	Fail Since Clear	Engine Position System Performance Bank 1
P0009-00	Fail Since Clear	Engine Position System Performance Bank 2

In addition to the new updated reports layout, you will also see:

- Share button is added to many of the global OBDII modes which will allow you to print, email or save your reports
- Save button is added to DTC, all system DTC scan and automated system test to let you save those reports for future viewing from the “View Saved Tests” Home tile

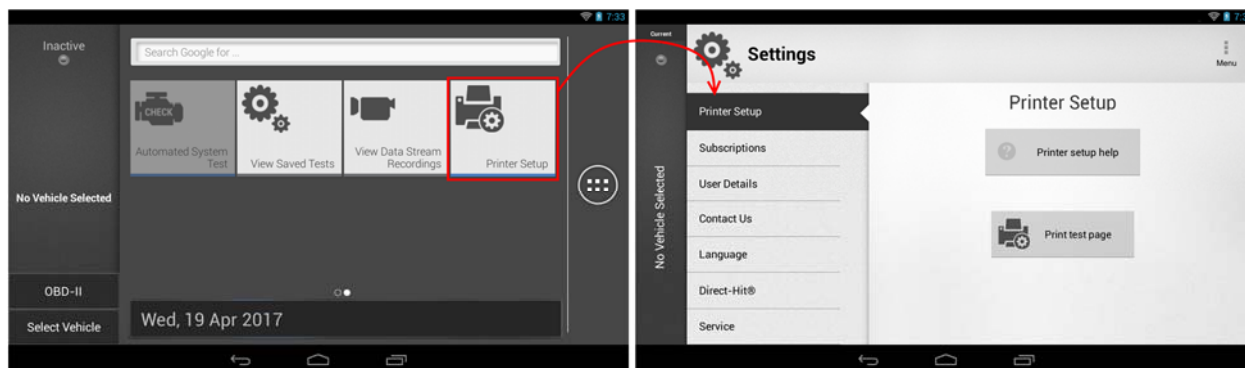


- Clicking “Save” will display a message indicating the report was saved. You can access this file by tapping on the “View Saved Tests” tile on the home screen:



PRINTER SETUP IMPROVEMENTS

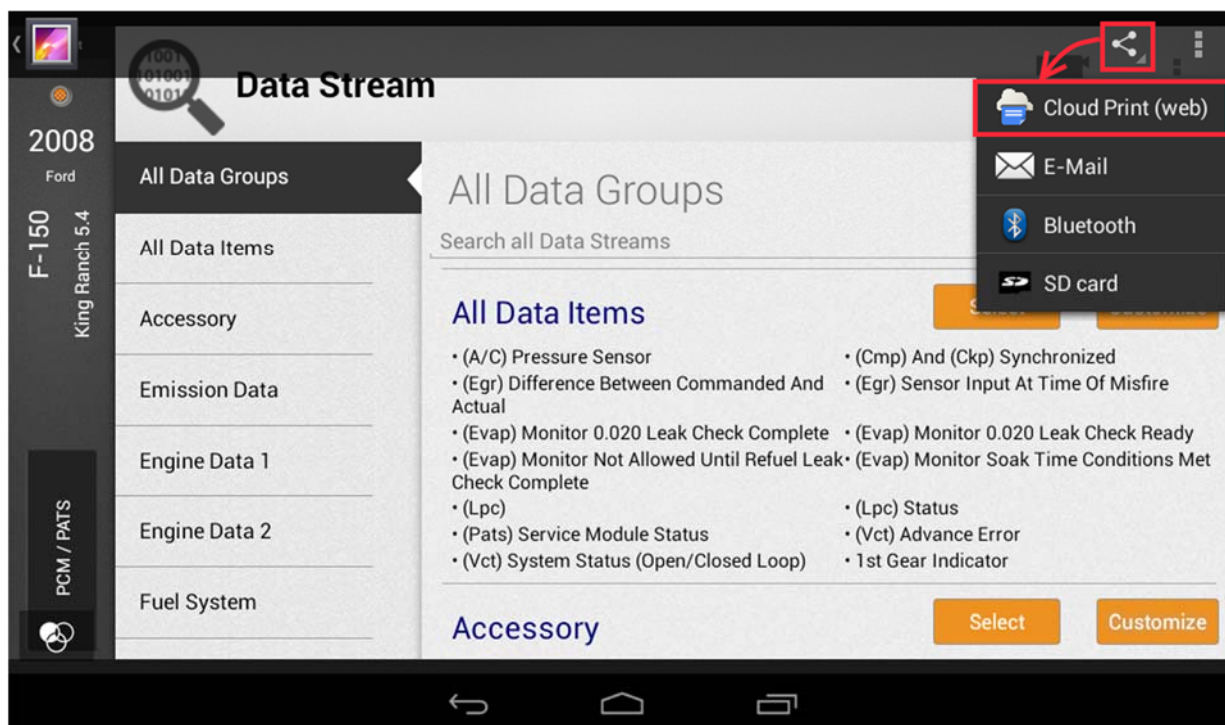
There is now an in-tool option to initiate Printer Setup. This new “Printer Setup” screen is now available from the home screen as a quick shortcut to the Settings module.



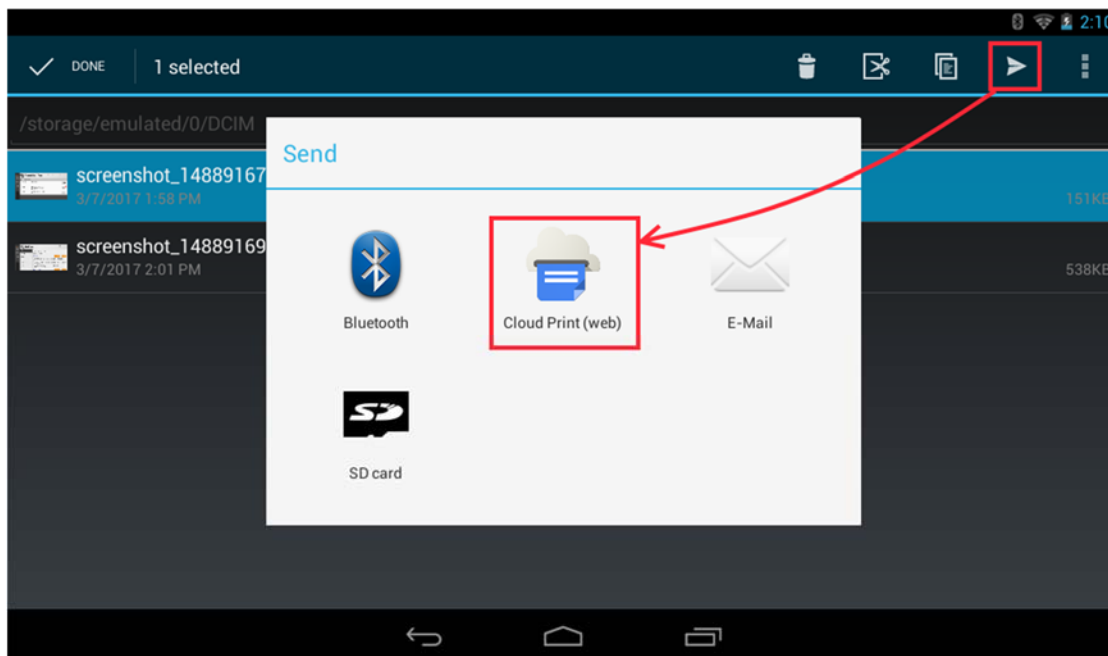
For more information on printer setup, tap on the “Printer setup help” button to launch a web browser with the steps necessary for assisting you in setting up your printer

ADDITIONAL PRINT SERVICES

Printing Screen Shots



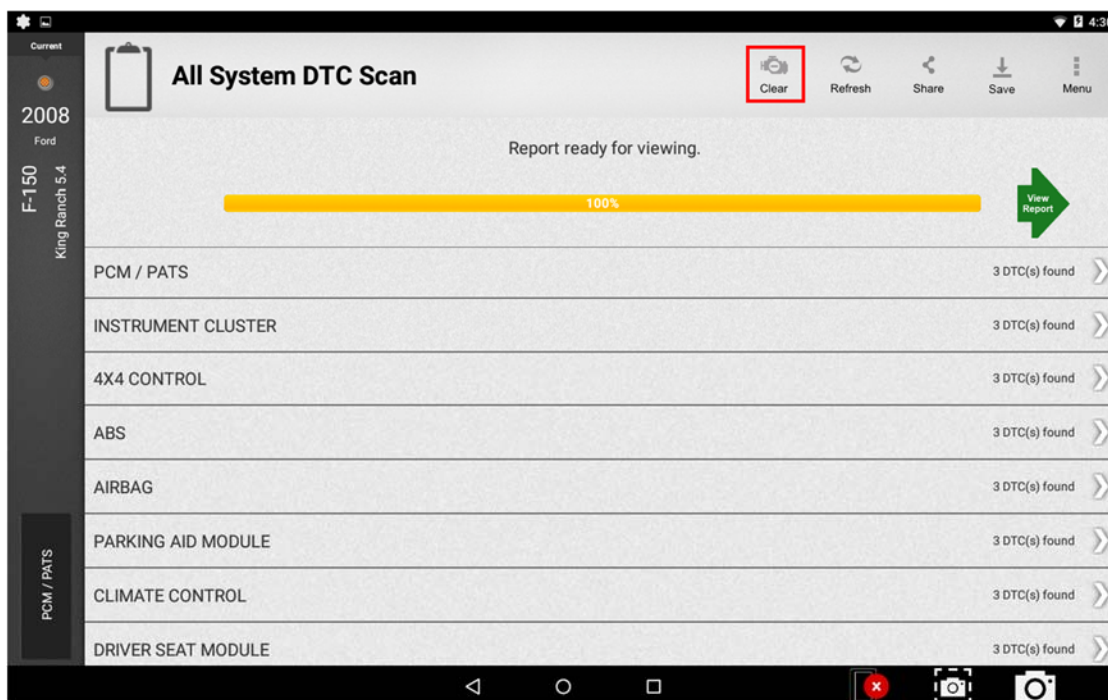
Printing Saved or downloaded files



ALL SYSTEM DTC CLEAR

All system DTC clear is now available after running an “All System DTC Scan” or “Automated System Test” so long as DTCs were found on any of the controllers scanned.

In this instance, a “Clear” button will be made visible on the header bar:



Tapping on the “Clear” button will bring up the following confirmation dialog:



- Tapping **Clear & Re-read** will send the clear DTC command on the controllers with DTCs, and then immediately issue the read DTC command on those controllers.
- Tapping **Clear Only** will send the clear DTC command on the controllers with DTCs and report the results on the screen.
- Tapping **Cancel** will not perform the clear DTC command.

Upon completion of a DTC clear, a warning dialog is shown to indicate that not all vehicles will honor the clear DTC command on the specified controller and that additional steps may be required from the technician.