


DIAGNOSTIC TOOLS AND ACCESSORIES



LOOK FOR YOUR REGIONAL MAC TOOLS DIAGNOSTICS SPECIALIST
CONTACT 800.MACTOOLS TO LEARN MORE



 @MAC_TOOLS

 FACEBOOK.COM/MACTOOLS38

 MACTOOLS38

800.MACTOOLS • MACTOOLS.COM

Disclaimer: Items shown are available for a limited time only and are subject to availability through your participating Mac Tools Distributor, Franchisee or Sales Representative. Printed colors may differ slightly from the actual color. Mac Tools is not responsible for typographical or photographic errors.

Mac Tools, a Division of Stanley Industrial & Automotive, LLC • 505 N Cleveland Avenue • Westerville, OH 43082

© 2017 Mac Tools

Printed in the United States



ENGINE

Current		Data Stream		All Data Items			
<input type="checkbox"/>	Vehicle Speed	59	<input checked="" type="checkbox"/>	<input type="checkbox"/>	Intake Air Temperature	156 F	<input checked="" type="checkbox"/>
<input type="checkbox"/>	A/C High Side Pressure	476 psi	<input checked="" type="checkbox"/>	<input type="checkbox"/>	Fuel Tank Pressure	-4.7 inH2O	<input checked="" type="checkbox"/>
<input type="checkbox"/>	Startup Engine Coolant Temperature	52 F	<input checked="" type="checkbox"/>	<input type="checkbox"/>	Calculated Converter Temperature	1296 F	<input checked="" type="checkbox"/>
<input type="checkbox"/>	Mass Air Flow	159.30 g/s	<input checked="" type="checkbox"/>	<input type="checkbox"/>	Fuel Level	25.76 gal	<input checked="" type="checkbox"/>
<input type="checkbox"/>	Evaporative Emissions Canister Purge	91%	<input checked="" type="checkbox"/>	<input checked="" type="checkbox"/>	Calculated BARO	12 psi	<input checked="" type="checkbox"/>
				<input type="checkbox"/>	Start Up Intake Air Temperature	37 F	<input checked="" type="checkbox"/>
				<input type="checkbox"/>	Ignition 1	10.8 V	<input checked="" type="checkbox"/>
				<input type="checkbox"/>	Spark Advance	60.7 F	<input checked="" type="checkbox"/>

1 of 2

MOT 10



DIAGNOSTIC TOOLS AND ACCESSORIES

MAC TOOLS PROVIDES COMPLETE AUTOMOTIVE DIAGNOSTIC SOLUTIONS FOR EVERY TECHNICIAN

Whether you're performing critical diagnostics and reprogramming or need quick code information Mac Tools has the answer.

Choose from our most enhanced scan tool line with over 30 years of OEM-level coverage and built-in repair information featuring over 30 million experience-based repair solutions specific to each vehicle.

A full offering of accessories and software updates keep your shop on the leading edge of automotive diagnostics.



Large 10.4" optically-bonded color touch-screen provides high visibility, even in direct sunlight



Identifix® repair info available during vehicle scanning, including Code-Assist®, Symptom-Assist® and Repair-Trac®; 60-day trial included



VCI is J-2534 compliant—can be used with separate PC and OEM software for ECU reflashing



One-touch DTCs - Tap to get codes with access to millions of confirmed experience-based fixes



Identifix®, Code-Assist®, System-Assist®, and Repair-Trac® are registered trademarks of Identifix, Inc.



***FOLLOW THIS LINK TO SEE WHAT MAC TOOLS
DIAGNOSTICS PRODUCTS CAN DO FOR YOUR BUSINESS:***

www.mactools.com/ET7200_MDT10



30 years of extensive coverage, special tests, and repair information



Dual wi-fi system separates tablet-to-internet communications from transmitter-to-tablet for fast and reliable wireless communications



One-touch automatic ID function can identify most vehicles in as little as 5 seconds



Requires separate PC and OEM software



Comprehensive full-color wiring-diagram library for 1986 and newer vehicles



THE MOST ADVANCED SCAN TOOL OFFERED BY MAC TOOLS

- Extremely fast diagnostic software built into an Android™ tablet
- Wireless communication to the vehicle
- Full access to new, interactive color wiring diagram database
- Large 10.4" screen provides high visibility, even in direct sunlight
- Includes J-2534 reflash device for OEM reprogramming
- Rear camera with a flash, front camera, and dual speakers
- Display up to 16 data items or graph up to 8 data items simultaneously
- Customize Datastream display, graph, and color for easy viewing
- HDMI output for use with external monitor

ET7200 MDT 10 SCAN TOOL

- Complete bi-directional diagnostic platform for both OBD I* and OBD II equipped domestic, Asian, and European vehicles
- Over 25,000 vehicle systems and over 12,000 actuation/adjustment tests
- AutoID most CAN vehicles in less than 5 seconds
- Full-color wiring-diagram library for 1986 and newer vehicles
- 12-Month Domestic, Asian and European coverage subscription
- Over 30 million experienced-based DTC fixes on-tool
- Built-in repair information, such as tune-up specs, key fob procedures, battery reset procedures, drive cycles, trans pan IDs and more
- Dual wi-fi system for dedicated vehicle and internet connections for fast and reliable wireless communication
- Capacitor-equipped transmitter maintains communication in the event of a momentary power interruption from the vehicle
- Lifetime warranty* and ASE Certified Technical Support



HD TOUCH-SCREEN DISPLAY 10.4" Capacitive, High-Resolution

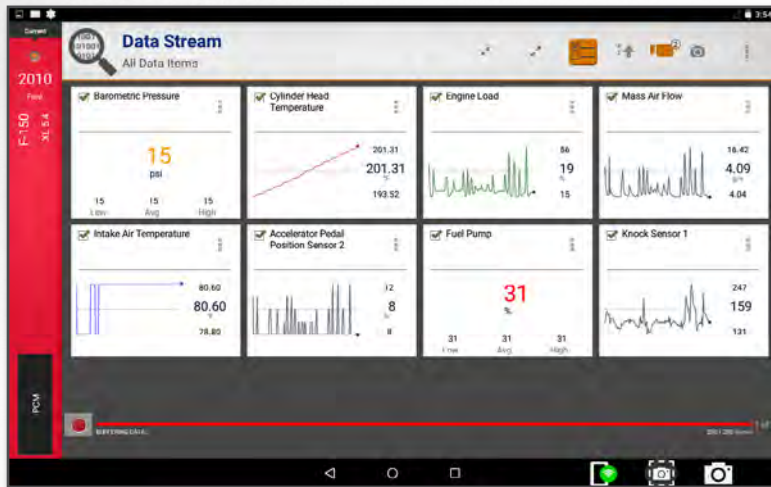


HARDWARE FEATURES:

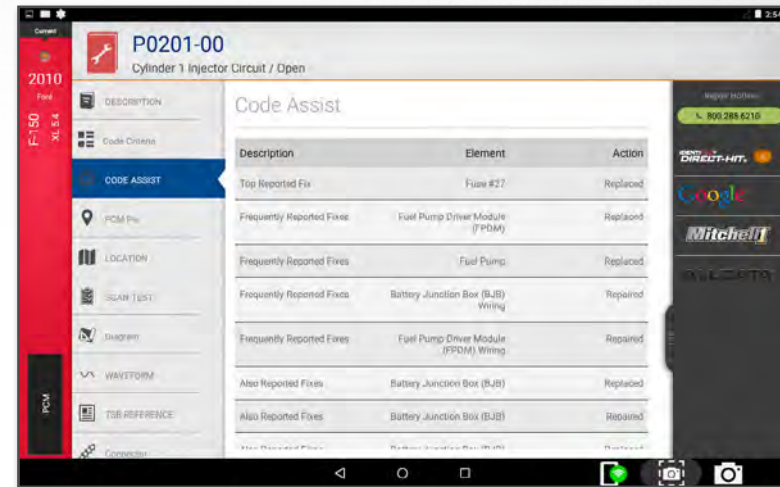
- (1) MDT 10 Android tablet
- (1) OBD II Cable
- (1) Power Cable
- (1) USB Cable
- (1) Carry Case
- (1) VCI - Vehicle Communication Interface
- (1) 60-Day free Identifix trial for new subscribers

*Applies to existing and future purchasers of the MDT 10.
To qualify, simply maintain an active, uninterrupted diagnostics subscription.

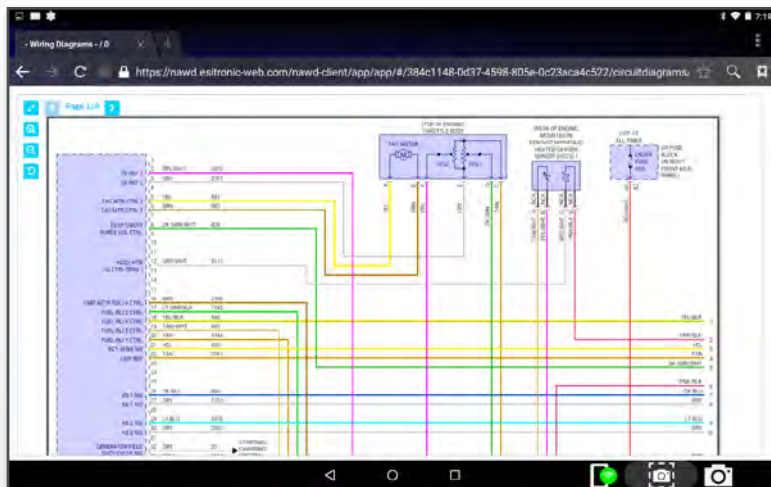




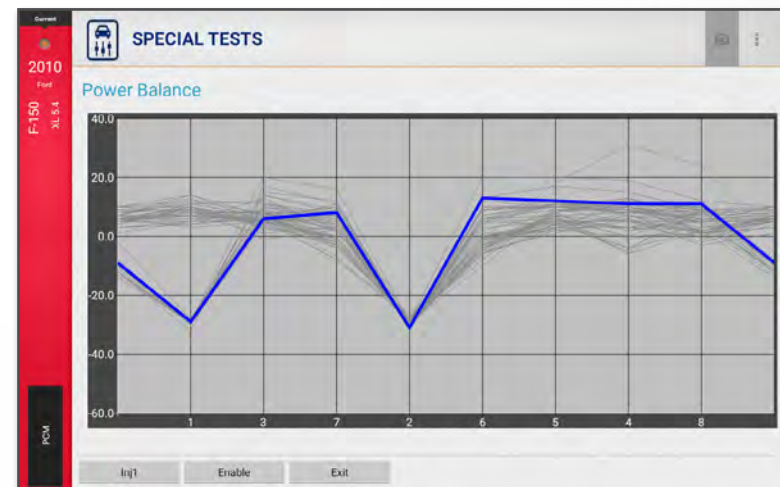
Customize Datastream display, graph, and color for easy viewing



Diagnose vehicles faster with built-in repair information



Includes access to new, interactive color wiring diagram database



Perform the Ford Power Balance Test - just like the OEM Scan Tool

CAPACITOR EQUIPPED

VCI Transmitter maintains communication in the event of a momentary power interruption from the vehicle



LARGE 10.4" DISPLAY

Optically bonded color touch-screen provides high visibility - even in direct sunlight



FRONT AND REAR CAMERAS

Rear camera with flash, as well as front-facing camera and dual speakers

J-2534 COMPLIANT

Can be used with separate PC and OEM software for ECU reflashing



DOCKING STATION

For charging as well as storing your MDT 10 and VCI interface

DUAL WI-FI SYSTEM

Dedicated tablet-to-internet communications from transmitter to tablet for fast and reliable wireless communications

MENTOR TOUCH SCOUT

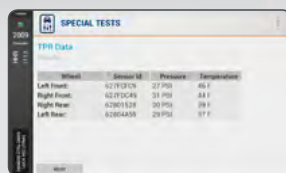
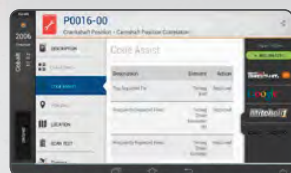


THE SCAN TABLET EVERY TECHNICIAN NEEDS

- 7" Android-based enhanced scan tool with over 30 years of OEM-level coverage
- Built-in repair information with over 30 million experience-based repair solutions specific to each vehicle

ET6200 MENTOR TOUCH® SCOUT

- Professional scan tool built into a durable Android™ tablet
- Up to four hours of battery run time
- Extremely fast boot time and Swift On function
- Wi-Fi and web browser allow full Internet access
- Bluetooth® allows endless possibilities of peripheral devices
- Built-in training videos to learn scan tool and vehicle test procedures
- 7" Capacitive, high-resolution touch-screen display
- AutoDetect™: alerts technician when repair information is available
- Auto ID™: automatically identifies CAN vehicles to quickly set up year, make, model, and engine
- Deep Link, In-session access to Direct-Hit™ for Identifix® subscribers
- Contains all your favorite information resources – Code Assist™, Symptom Assist™, Repair-Trac™, and more



TOUCH-SCREEN DISPLAY 7" Capacitive, High-Resolution



HARDWARE FEATURES:

- (1) Mentor Touch® Scout scan tablet
- (1) OBD II Cable
- (1) Power Cable
- (1) USB Cable
- (1) Carry Case



STEERING WHEEL BRACKET

Keeps the tool right where you want it



MENTOR TOUCH SCOUT

P0016-00

Crankshaft Position - Camshaft Position Correlation

DESCRIPTION

Code Name

CRK40001

2014-16

LOCATION

SCAN TEST

Code Assist

Description

Day-After-Mortgage

Subvented Mortgage Plan

Discovered Reported Case

Report

Timing
Set

Timing
Chain
Sensless
Oil

Timing
Chain
Sensless

Action

Replace

Replace

Replace

App Number

APP-123456

DISCOFIN

Google

Microsoft

SALESFORCE

MAC TOOLS



SCAN TOOLS

ET110ANX **MAC TASKCODE™** **OBD II SCAN TOOL**

- ABS codes and definitions for most 1996-2013 GM, Ford, Chrysler, Toyota, Honda, Nissan, and Hyundai vehicles
- Read and erase DTCs, Freeze Frame, Readiness Monitors, and MIL Status
- Live engine data stream for all OBD II vehicles
- Meets the latest OBD II standards for light-duty trucks, diesel, and hybrid vehicles
- Automatically reads DTCs when connected for fast diagnostics
- Displays VIN



ET1210ANX **MAC TASKPLUS™ OBD II** **SCAN TOOL**

- Bright, color screen for easy viewing
- ABS codes and definitions for most GM, Ford, Chrysler, Toyota, Honda, Nissan, and Hyundai vehicles
- SRS/Airbag code and definitions for most GM, Ford, Chrysler, Toyota, Honda, Nissan, and Hyundai vehicles
- Read and erase DTCs, Freeze Frame, Readiness Monitors, and MIL Status
- Displays vehicle battery, starting, and charging voltage
- Graph and record live engine data stream
- AutoID™ automatically selects vehicle make, model, year and engine
- Mode 6 data with TID and CID Definitions
- Mode 5 O2 Monitor test results



ET1305ANX **TASKMOBILE CELLULAR SCAN TOOL**

- QuickCheck™ - Summary of vehicle emissions, codes and code definitions
- AutoID™ - Automatically identify most 2000 and newer vehicles
- Vehicle Activity Log - History of vehicle tests and procedures
- TaskConnect™ with more than 4.3 million in-app, verified fixes
- Read/erase codes, view Freeze Frame data, display I/M Monitors, graph Live Datastream, and more!
- Read/Erased Codes – OEM Enhanced, Pending, and Global OBD II codes and definitions (optional ABS and Airbag)
- Customize Live Datastream for optimal viewing
- Record, save and playback Live Datastream
- Screen shot sharing via Facebook and email
- Includes OEM Enhanced codes and definitions for most Domestic, Asian, and European vehicles

EXPAND YOUR COVERAGE WITH IN-APP PURCHASES:

- ABS Codes and Definitions for most 1996 and newer GM, Ford, Chrysler, Honda, Hyundai, Nissan and Toyota vehicles
- AIRBAG/SRS codes and definitions related to the Airbag warning light for most 1996 and newer GM, Ford, Chrysler, Honda, Hyundai, Nissan and Toyota vehicles

DIAGNOSE WITH **YOUR SMARTPHONE**





NOW WITH EUROPEAN ABS AND ENHANCED VEHICLE TESTS

- Enhanced powertrain coverage for Domestic, Asian, and European vehicles
- ABS codes and definitions for most GM, Ford, Chrysler, Toyota, Honda, Nissan, Hyundai, BMW, Mercedes, Smart, VW, Audi, Jaguar, Land Rover, and Volvo
- SRS/Airbag code and definitions for most GM, Ford, Chrysler, Toyota, Honda, Nissan, Hyundai BMW, Jaguar, Land Rover, Volvo, Volkswagen and Audi

ET1510ANX MAC TASKCONNECT OBD II ENHANCED SCAN TOOL

HIGHLIGHTS:

- ABS Enhanced Live Datastream for GM, Ford and Toyota
- Transmission Enhanced Live Datastream for GM and Ford
- Engine Enhanced Live Datastream for GM, Ford and Toyota
- EPB caliper retract for most Audi/VW vehicles
- Brake Bleed test for Ford, GM, Chrysler, and Toyota vehicles
- Steering Angle Reset for GM and Nissan vehicles
- BMW Brake Zeroing Test [resets brake pad wear sensor]





NEW FEATURES:

- CodeConnect® - Over 26 million vehicle-specific top reported DTC fixes
- Ford OBD II On Demand Tests (Injector buzz, KOEO, KOER, etc.)
- Battery and Oil Light Reset
- Code Criteria - detailed conditions required for DTC
- Displays vehicle battery, starting, and charging voltage
- Calculates vehicle fuel mileage using MAF data

OBD II FUNCTIONS:

- Read and erase DTCs, Freeze Frame, Readiness Monitors, and MIL Status
- Graph and record live engine data stream
- Mode 6 data with TID and CID Definitions
- Mode 5 O2 Monitor test results
- AutoID™ automatically selects CAN vehicle make, model, year and engine
- Displays manufacturer-specific code definitions
- Meets the latest OBD II standards for light-duty, diesel, and hybrid vehicles
- Component Locator - describes vehicle component locations
- Drive Cycle Monitor - current state of readiness monitors in real-time

SCAN TOOLS COMPARISON

FEATURES	 ET110ANX MAC TASKCODE™ OBD II SCAN TOOL	 ET1210ANX MAC TASKPLUS™ OBD II SCAN TOOL	 ET1305ANX TASKMOBILE CELLULAR SCAN TOOL	 ET1520ANX MAC TASKCONNECT OBD II ENHANCED SCAN TOOL
DTCs, Freeze Frame, Monitors, and MIL Status	•	•	•	•
Domestic ABS Codes & Definitions*	•	•	In App Upgrade [†]	•
Asian ABS Codes & Definitions*	•	•	In App Upgrade [†]	•
Live engine data stream	•	•	•	•
Color Screen	•	•	•	•
Domestic SRS/Airbag Codes & Definitions*	•	•	In App Upgrade [†]	•
Asian SRS/Airbag Codes & Definitions*	•	•	In App Upgrade [†]	•
Graph live data stream parameters		•	•	•
View Mode 6 Diagnostic Monitor Test Results		•		•
Displays battery, starting, and charging voltage		•		•
Mode 5 O2 Monitor test results		•		•
CodeConnect® - Over 26M vehicle-specific DTC fixes			•	•
Enhanced powertrain coverage for Domestic, Asian, and European vehicles			Domestic/Asian	•
Ford OBD II On Demand Tests (Injector buzz, KOEO, KOER, etc.)				•
Battery and Oil Light Reset				•
Code Criteria - detailed conditions required for DTC				•
Calculates vehicle fuel mileage using MAF data				•
Acronym Library - defines commonly used vehicle acronyms				•
Component Locator - describes vehicle component locations				•
Drive Cycle Monitor - current state of readiness monitors in real-time				•
European SRS/Airbag Codes & Definitions*				•
ABS Enhanced Live Datastream for GM, Ford and Toyota				•
Transmission Enhanced Live Datastream for GM and Ford				•
Engine Enhanced Live Datastream for GM, Ford and Toyota				•
EPB caliper retract for most Audi/VW vehicles				•
Brake Bleed test for Ford, GM, Chrysler, and Toyota vehicles				•
Steering Angle Reset for GM and Nissan vehicles				•
BMW Brake Zeroing Test (Resets Brake Pad Wear Sensor)				•

*See sales flyer for more detailed coverage information

[†]EXPAND YOUR COVERAGE WITH IN-APP PURCHASES:

- ABS Codes and Definitions for most: 1996 and newer GM, Ford, Chrysler, Honda, Hyundai, Nissan and Toyota vehicles
- AIRBAG /SRS codes and definitions related to the Airbag warning light for most 1996 and newer GM, Ford, Chrysler, Honda, Hyundai, Nissan and Toyota vehicles





ET6500-100 **10-PC CABLE KIT**

- The top ten Domestic, Asian, and European adapters
- Covers certain OBD I, OBD II, and sub-system applications
- Includes cables for Ford EEC, Ford ABS, Toyota DCL 1&2, Chrysler CCD, Chrysler/Mitsubishi, Nissan 2, BMW, and Mercedes

ET6500-101 **3-PC DOMESTIC CABLE KIT**

- Three of the most commonly used Domestic OEM adapters
- Includes Chrysler CCD, Ford EEC, and GM 12-PIN ALDL



ET6500-102 **3-PC ASIAN CABLE KIT**

- Three of the most commonly used Asian OEM adapters
- Includes Toyota DCL 1, Toyota DCL 2, and Nissan 2



ET6500-103 **3-PC EUROPEAN CABLE KIT**

- Three of the most commonly used European OEM adapters
- Includes Mercedes 38-PIN, BMW, and VW 4-PIN



3893-05 **REPLACEMENT OBD II CABLE**

- Compatible with ET6200

UPGRADE YOUR SCAN TOOL WITH WIRELESS TPMS ACTIVATION

ET3834TCH **TIRE PRESSURE MONITOR RESET TOOL**

- Works with ET7200 and ET6200
- Activates and registers TPMS sensors via Bluetooth®
- Decodes and transmits sensor IDs
- Can be used as a stand-alone TPR tool
- Register new sensor IDs on Asian vehicles
- Internet updatable



ET6500-07 **HEAVY-DUTY STARTER KIT WITH CABLES**

- Three of the most commonly used European OEM adapters
- Includes Mercedes 38-PIN, BMW, and VW 4-PIN

ET6200-UPD **SCOUT 12-MONTH SUBSCRIPTION WITH LIFETIME HARDWARE WARRANTY**

- Includes Domestic, Asian, European vehicle coverage
- Provides 12-months of frequent and valuable updates for new coverage, coverage enhancements, repair information, application improvements
- Also includes the Diagnostics for Life* lifetime hardware warranty

* Diagnostics for Life applies to existing and future purchasers of the Mentor Touch® Scout. To qualify, simply maintain an active, uninterrupted diagnostics subscription.



FREE VEHICLE COVERAGE UPDATES FOR 3 YEARS

REGISTER TPMS SENSORS VIA
BLUETOOTH OBD II ADAPTER



**COMPLETE
ASIAN,
DOMESTIC,
AND
EURO
COVERAGE**

ET3838 STAND-ALONE TPMS TOOL WITH BLUETOOTH OBD II

- All-in-one TPMS tool with sensor activation and on-board procedures
- Free vehicle coverage updates for 3-years
- Register TPMS sensors wirelessly via Bluetooth OBD II adapter
- OBD II adapter dock for easy storage
- Reads TPMS codes on applicable vehicles
- Print via IR printer or USB
- Updatable via USB port
- Includes SD card for vehicle history storage
- On screen, step-by-step relearn procedures
- Rubber over-mold for enhanced durability
- Integrated key fob RF signal strength test
- Large 3.5" Color display with graphical interface
- Register TPMS sensors wirelessly via Bluetooth OBD II adapter
- Complete Asian, Domestic, and European coverage
- Compatible with aftermarket programmable sensors, including Schrader EZ-sensor™, VDO REDI-sensor™, HUF IntelliSens®, and Alligator Sens.it®
- 2-Year Warranty



INCLUDES:

- (1) TPMS Handset
- (1) Bluetooth OBD II Adapter
- (1) Wall Mount Battery Charger
- (1) Carrying Case
- (1) USB Cable
- (1) RJ45 Cable
- (1) Rechargeable Li-Ion Battery
- (1) Installation CD
- (1) Relearn Magnet

**2-YEAR
WARRANTY**



EV8202 MAC TOOLS EVAP MASTER

- Can be used with shop air or nitrogen
- Compatible with Mineral Oil and OEM-approved UltraTraceUV® solution
- Built-in water separator keeps the Mac Evap Master and smoke dry and clean
- Leak Down Test capable - measures pressure decay
- Large combination pressure & vacuum gauge
- Large full-range flow meter detects microleaks™ below .010"
- Aircraft-grade aluminum smoke production tank
- Variable Smoke Flow - Helps pinpoint smoke exiting a leak
- Directional knob shows exact flow position
- High-quality glow plug heating element
- Automatic shutoff solenoid prevents unwanted flow
- Durable, military-grade design
- Compact and portable - fits in most tool boxes
- Uses OEM tested & approved smoke technology

INCLUDES:

- (1) Mac Tools Evap Master Unit
- (1) UV / LED Combination Light with Laser Pointer
- (1) UV Glasses for Viewing UltraTrace UV® Dye
- (1) EVAP Service Port Adapter
- (1) Exhaust Cone
- (17) Cap Plug Adapters
- (1) Wind / Water Leaks Adapter
- (1) Schrader® Removal / Installation Tool
- (1) Accessory case
- (2) 8oz OEM Approved Dye Solution bottles