



AWB538A

Operation and Maintenance Manual

☑ 3/8" AWB538A



WARNING

To reduce the risk of injury, read and understand these safety warnings and instructions before using the tool. Keep these instructions with the tool for future reference. If you have any questions, contact your **MAC TOOLS** representative or distributor.

3/8" Butterfly Impact Wrench

TABLE OF CONTENTS

Introduction	2
Safety Instructions	3
Specifications	4
Getting Started	5
Tool Components	6
Contact Information	8

INTRODUCTION

The **Mac Tools™ AWB538A** is a precision-built tool, designed for professionals for torque assembly and disassembly of threaded fasteners. This tool will deliver efficient, dependable service when used correctly and with care. As with any fine power tool, for best performance the manufacturer's instructions must be followed. Please study this manual before operating the tool and understand the safety warnings and instructions. The instructions on installation, operation and maintenance should be read carefully, and the manuals kept for reference. NOTE: Additional safety measures may be required because of your particular application of the tool. Contact your **Mac Tools** representative or distributor with any questions concerning the tool and its use.

Mac Tools
505 North Cleveland Avenue
Suite 200
Westerville, Ohio 43082

WARRANTY

We warrant that this tool shall be free from manufacturing defects for a period of ONE YEAR from the original purchase date. Our obligation to the original purchaser shall be limited to repairing or replacing, at our expense (not including shipping charges) a defective tool if returned by the original purchaser within one year from the date of purchase, all incoming shipping charges prepaid. THIS WARRANTY DOES NOT COVER DEFECTS OR DAMAGES TO THE TOOL (i) after the warranty period expires; (ii) resulting from misuse or abnormal operation; (iii) resulting from a failure to properly lubricate, maintain or operate the tool; or (iv) resulting from any repair or maintenance services performed by any party other than Mac Tools.



WARNING

IMPORTANT SAFETY INFORMATION ENCLOSED.
READ THIS MANUAL BEFORE OPERATING THE MACHINE.

FAILURE TO OBSERVE THE FOLLOWING WARNINGS COULD RESULT IN INJURY.



Do not use damaged, frayed or deteriorated air hoses and fittings.



Air powered tools can vibrate in use. Vibration, repetitive motions or uncomfortable positions may be harmful to your hands and arms. Stop using any tool if discomfort, tingling feeling or pain occurs. Seek medical advice before resuming use.



Do not carry the tool by the hose.



Keep body stance balanced and firm. Do not overreach when operating this tool.



Always wear hearing protection when operating this tool.



Always turn off the air supply and disconnect the air supply hose before installing, removing or adjusting any accessory on this tool, or before performing any maintenance on this tool.



Always wear eye protection when operating or performing maintenance on this tool.



Operate at 90 psig (6.2 bar / 620 kPa) Maximum air pressure.

GENERAL SAFETY INSTRUCTIONS



WARNING

- Always wear ANSI Z87.1 eye protection when operating or performing maintenance on this tool. Everyday eye glasses are not safety glasses
- Always wear hearing protection when operating this tool
- Keep hands, loose clothing and long hair away from rotating end of tool
- Anticipate and be alert for sudden changes in motion during start up and operation of any power tool
- Keep body stance balanced and firm. Do not overreach when operating this tool
- Do not operate this tool for long periods of time. Vibration caused by tool action may be harmful to your hands and arms. Stop using any tool if discomfort, tingling feeling or pain occurs. Seek medical advice before resuming use
- Use impact rated accessories recommended by **Mac Tools** only. Inspect accessories before use. Do not use cracked or damaged accessories
- Do not operate this tool in the presence of flammable liquids, gasses, dust, or explosive atmospheres
- This tool is not insulated against electric shock
- Always turn off the air supply and disconnect the air supply hose before installing, removing or adjusting any accessory on this tool, or before performing any maintenance on this tool
- For safety, top performance, and maximum durability of parts, operate this tool at 90 psig (6.2 bar / 620 kPa) maximum air pressure at the inlet with 3/8" (10mm) inside diameter air supply hose
- Do not use damaged, frayed or deteriorated air hoses and fittings
- Do not lubricate tools with flammable or volatile liquids such as kerosene, diesel or jet fuel
- Do not remove any labels. Replace any damaged label

SPECIFICATIONS

Great for working in
small spaces

Butterfly forward /
reverse throttle



Swivel air inlet for
easy maneuvering

Three position
power settings

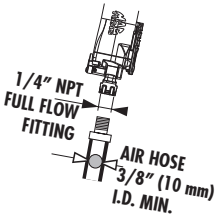
SPECIFICATIONS

Model #	Square Drive in	Max Torque ft-lbs / Nm	Noise Level						Vibration Level	
			Pressure dB(A)		Power dB(A)		Pressure dB(C)		m/s ²	
AWB538A	3/8	70/95	96	3*	107	3*	110	3*	7.0	1.19**

Model #	Free Speed rpm	Average Air Consumption cfm / l/min	Working Pressure psi / bar	Weight lbs / kg	Dimensions in / mm
AWB538A	12,000	1.7 / 48	90 / 6.2	1.17 / .53	5.5 x 2.1 x 1.5 / 140 x 54 x 40

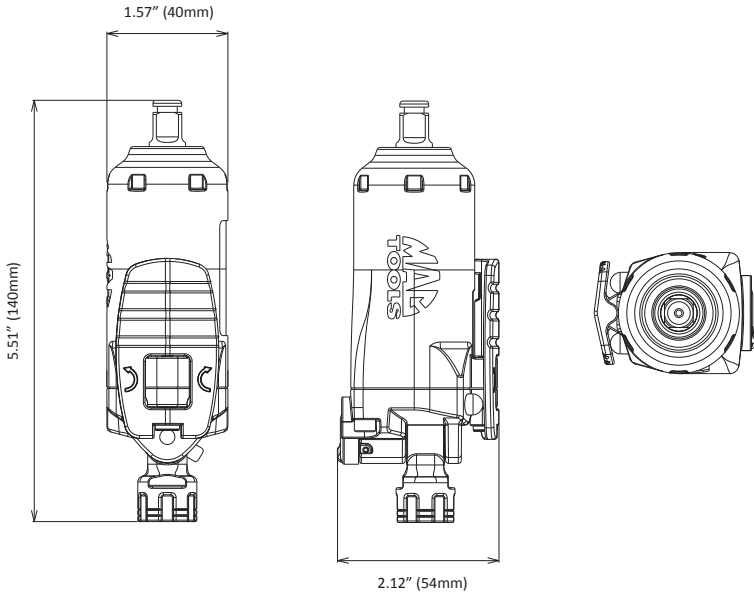
*=measurement uncertainty in dB(A)

**=measurement uncertainty in m/s²



GETTING STARTED

- Always operate, inspect and maintain this tool in accordance with all regulations (local, state, federal and country) that may apply to hand-held / hand-operated pneumatic tools
- Be sure all hoses and fittings are the correct size and are tightly secured
- Always use clean, dry air at 90 psig maximum air pressure. Dust, corrosive fumes and/or excessive moisture can ruin the motor of an air tool
- The use of a hose whip is recommended. A coupler connected directly to the air inlet increases tool bulk and decreases tool maneuverability
- For maximum performance, the coupler on the wall should be the next size larger than the coupler used on the tool. The coupler closest to the tool should not be less than the proper air supply hose size

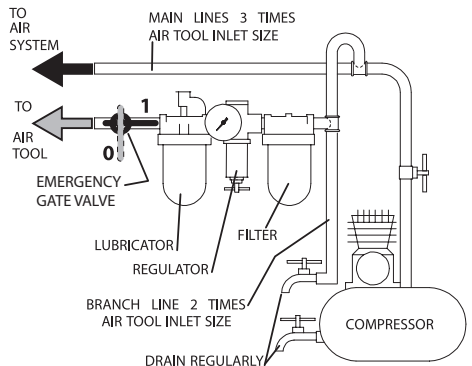


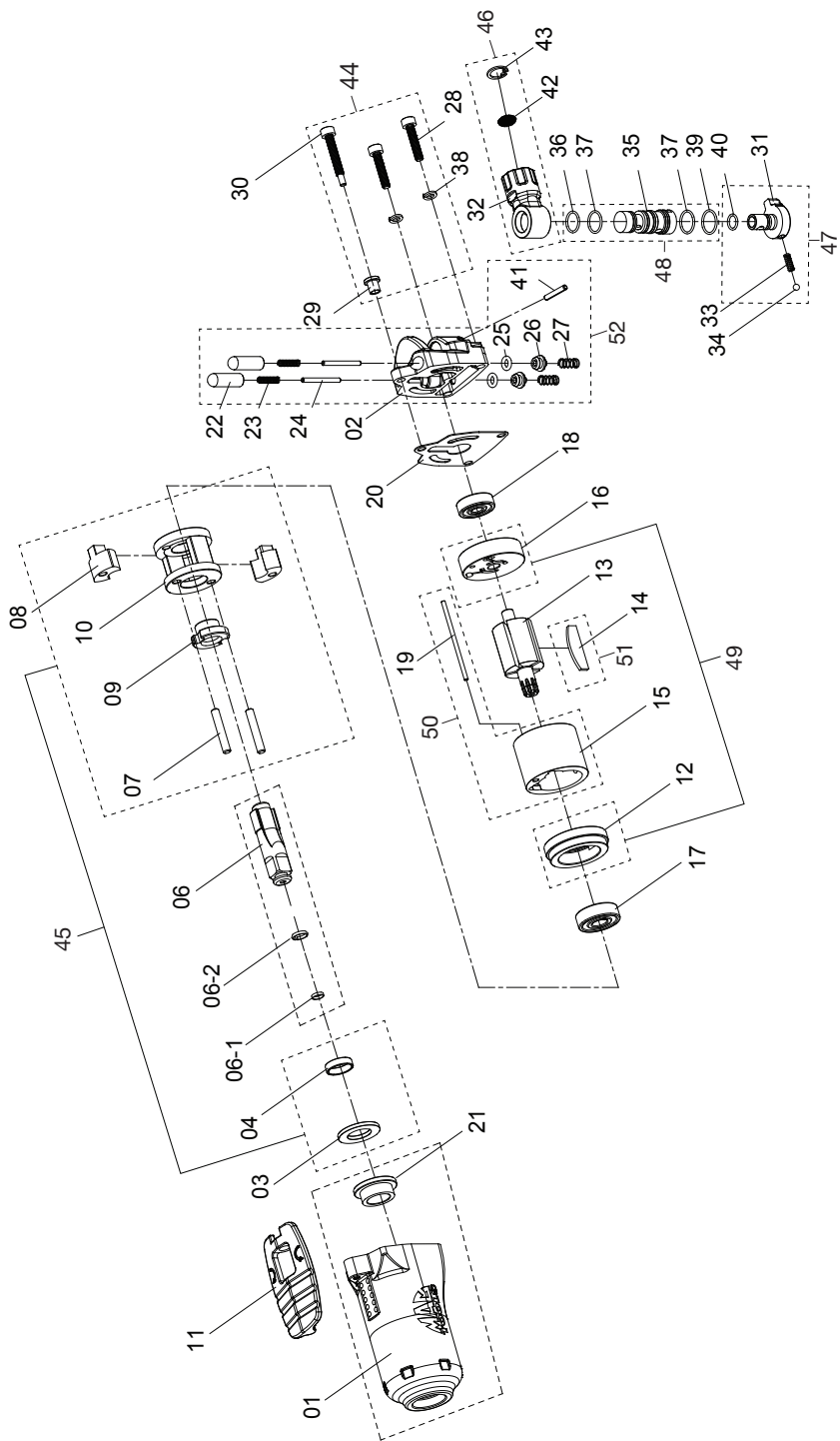
PLACING TOOL IN SERVICE

LUBRICATION



Always use an air line lubricator with this tool. After every eight hours of operation, if a lubricator is not used on the compressed air network, inject 1/2 to 1 cc of approved air tool oil (Mac Tools part #P032) through the tool's inlet connection.





ITEM #	PART #	DESCRIPTION	QTY
	AWB538A	3/8" BUTTERFLY IMPACT WRENCH	
11	31P200014	TRIGGER	1
13	31M200067	ROTOR	1
17	31R200242	BEARING	1
18	31R200273	BEARING	1
20	31G200031	GASKET	1
1	31K100128	HOUSING ASSEMBLY	1
21		BUSHING	1
6	31D100030	ANVIL ASSEMBLY	1
6-1		O-RING	1
6-2		SOCKET RETAINER	1
44	31K100120	SCREWS	1
28		SCREW	2
29		BUSHING	1
30		SCREW	1
38		WASHER	2
45	31K100121	IMPACT KIT	1
03		WASHER	1
04		AXLE BUSHING	1
07		HAMMER PIN	2
08		HAMMER	2
09		CAM	1
10		HAMMER FRAME	1
46	31K100122	AIR INLET KIT	1
32		AIR INLET	1
42		FILTER SCREEN	1
43		RETAINER RING	1

ITEM #	PART #	DESCRIPTION	QTY
47	31K100123	REGULATOR	1
31		REVERSE VALVE BUSHING	1
33		SPRING	1
34		STEEL BALL	1
40		O-RING	1
48	31K100124	REVERSE VALVE	1
35		REVERSE VALVE	1
36		O-RING	1
37		O-RING	2
39		O-RING	1
49	31K100125	PLATES KIT	1
12		END PLATE	1
16		END PLATE	1
50	31K100126	CYLINDER	1
15		CYLINDER	1
19		PIN	1
51	31K100127	5 ROTOR BLADES KIT	1
14		ROTOR BLADE	5
52	31K100129	REAR CASE	1
02		BACKHEAD	1
22		THROTTLE VALVE PLUNGER	2
23		SPRING	2
24		PIN	2
25		O-RING	2
26		THROTTLE VALVE	2
27		SPRING	2
41		PIN	1



CUSTOMER SERVICE

We at Mac Tools are committed to our customers, please reference the following phone number for a direct contact to one of our customer technicians. They will be more than happy to help with any service or warranty questions you may have about your power tool.

Mac Tools
505 North Cleveland Avenue
Suite 200
Westerville, Ohio 43082
800.MACTOOLS
MACTOOLS.COM

CE DECLARATION OF CONFORMITY

WE, **MAC TOOLS**, 505 NORTH CLEVELAND AVENUE, SUITE 200 WESTERVILLE, OHIO 43082 DECLARE UNDER OUR OWN RESPONSIBILITY THAT THE PRODUCT **AWB538A 3/8" BUTTERFLY IMPACT WRENCH** - IS IN CONFORMITY WITH THE «MACHINERY» DIRECTIVE 2006/42/EC - AND IS IN CONFORMITY WITH THE PROVISIONS OF THE FOLLOWING STANDARDS
ISO 12100:2010
ISO 11148-6:2012
ISO 15744:2002
ISO 28927-2:2009



A handwritten signature in black ink, appearing to read "Eric Min".

Eric Min
QUALITY DIRECTOR
23.12.2013