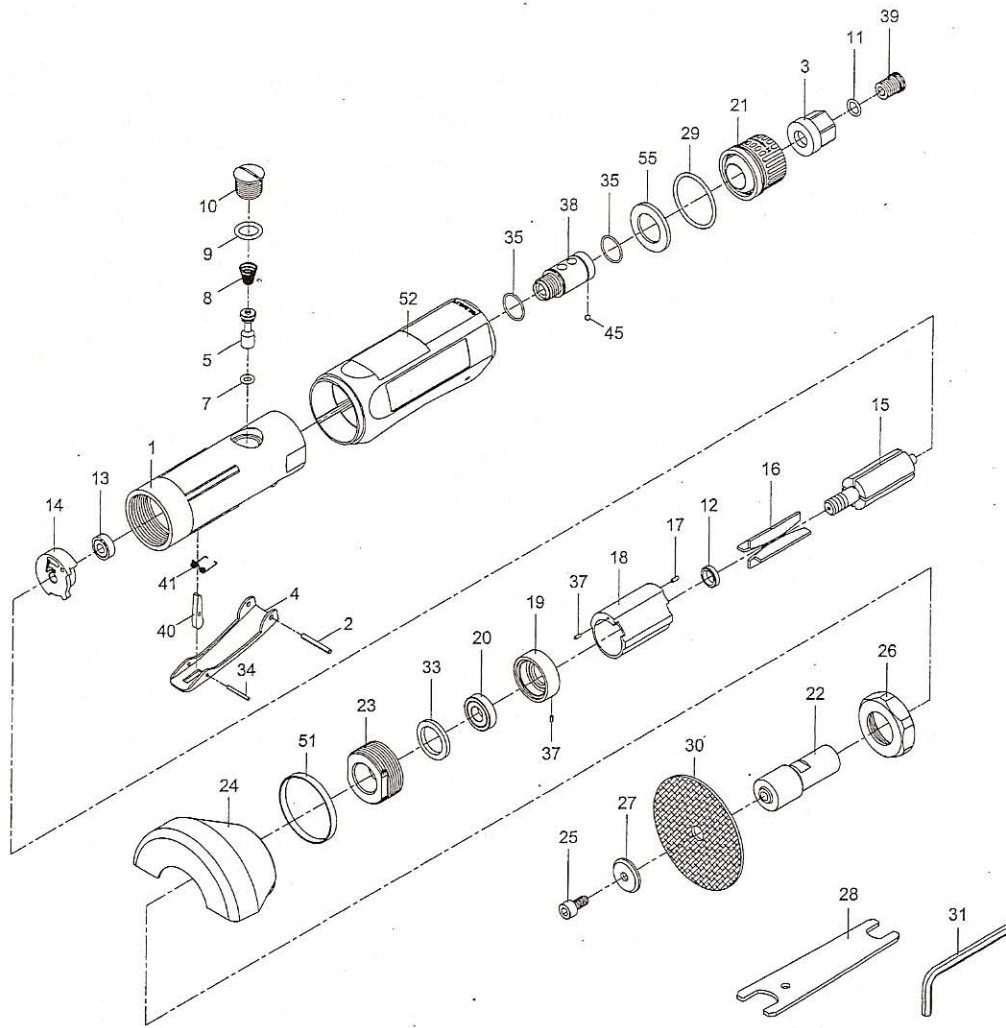


PARTS BREAKDOWN FOR 3" CUT-OFF TOOL - MODEL ATQP30



| Index No. | Parts No. | Description | Index No. | Parts No. | Description |
|-----------|-------------|-----------------------|-----------|-------------|------------------------|
| 1 | AGQP100-01 | Motor Housing | 23 | AGQP100-23 | Clamp Nut |
| 2 | AD3800AH-02 | Spring Pin (3x24) | 24 | ATQP30-24 | Disc Cover |
| 3 | AGQP100-03 | Air Inlet | 25 | AIQP30-25 | Screw (M6x12) |
| 4 | AGQP100-04 | Throttle Lever | 26 | ATQP30-26 | Clamp Nut |
| 5 | AGQP100-05 | Valve Shaft | 27 | ATQP30-27 | Washer |
| 7 | AD54013 | O-Ring (4.8x1.9) | 28 | AMP30-28 | Double Ended Spanner |
| 8 | AGQP100-08 | Valve Spring | 29 | AGQP100-29 | O-Ring (27x2) |
| 9 | AGQP100-09 | O-Ring (11.8x2.4) | 30 | ATQP30-30 | Cutting Wheel (3") |
| 10 | AGQP100-10 | Throttle Valve Plug | 31 | ATQP30-31 | Hex.Key Wrench (5mm) |
| 11 | AS20-52 | O-Ring (7.5x1.5) | 33 | AGQP100-33 | Washer |
| 12 | AGQP100-12 | Rotor Bush | 34 | AG200-38 | Spring Pin (2x18) |
| 13 | AGQP50M-13 | Ball Bearing (696zz) | 35 | AGQP100-35 | O-Ring (2) (14x1) |
| 14 | ARQP380-14 | Rear End Plate | 37 | AWQP120M-27 | Spring Pin (2) (1.5x4) |
| 15 | AGQP100-15 | Rotor | 38 | AGQP100-38 | Fixed Shaft |
| 16 | AGQP100-16 | Rotor Blade (4) | 39 | AGQP100-39 | Screw |
| 17 | AD1400-17 | Spring Pin (1.5x6) | 40 | AGQP100-40 | Safety Bar |
| 18 | AGQP100-18 | Cylinder | 41 | AGQP100-41 | Spring |
| 19 | AGQP100-19 | Front End Plate | 45 | AWQP120-24 | Steel Ball (1/8") |
| 20 | ATQP30S-20 | Ball Bearing (6000zz) | 51 | ATQP30-51 | Embellishment |
| 21 | AGQP100-21 | Deflector | 52 | AGQP100-52 | Rubber Grip |
| 22 | ATQP30-22 | Spindle | 55 | AGQP100-55 | Damping Material |