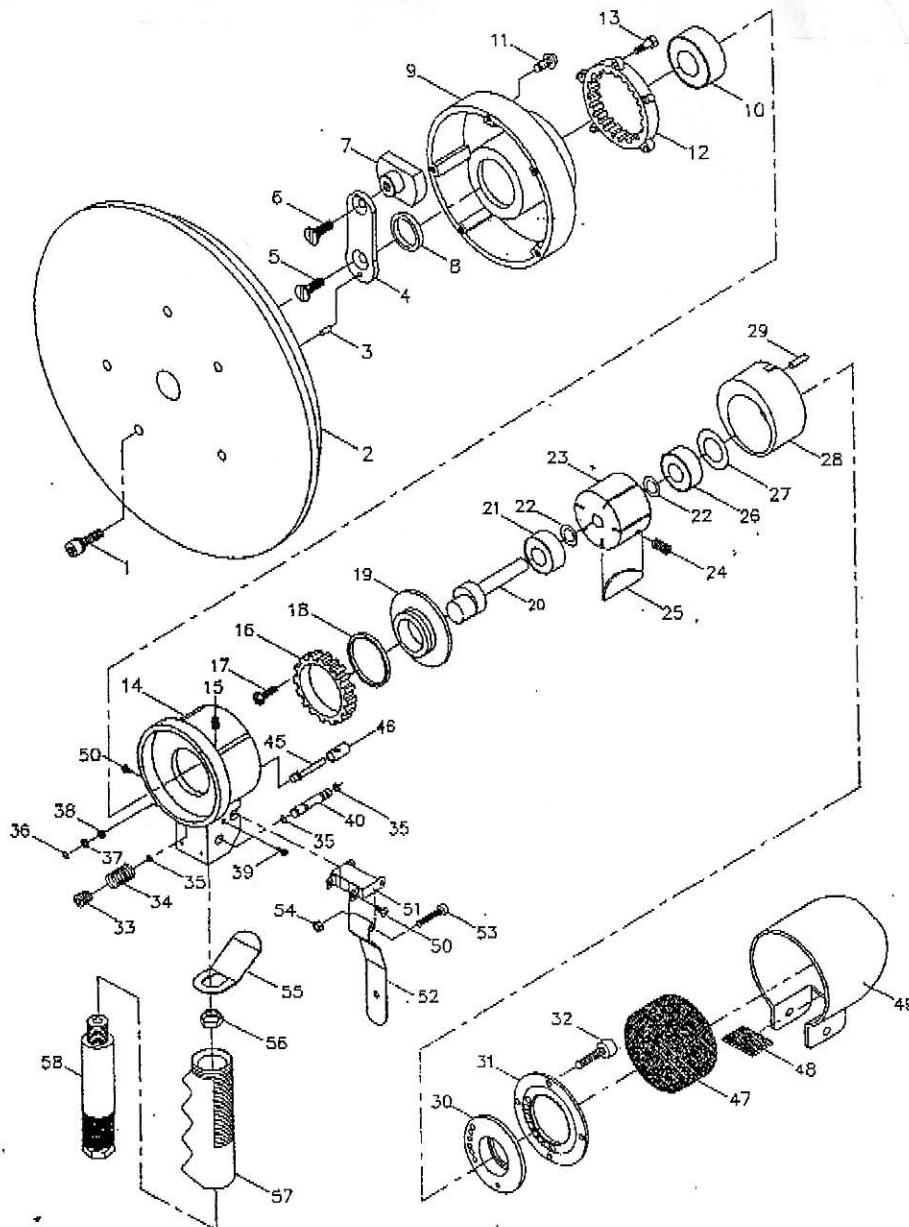


# AS408 8" GEARED ORBITAL SANDER



INDEX NO	PARTS NO.	DESCRIPTION	Q'TY	INDEX NO	PARTS NO.	DESCRIPTION	Q'TY
1	AS10603	GRIP SCREW	5	30	AS40628	REAR END PLATE	1
2	AS40802	8" PAD	1	31	AS40629	MOTOR COVER	1
3	AS40803	PIN	1	32	AS40631	MOTOR SCREW	4
4	AS40804	BALANCER SHAFT	1	33	AS40632	CAP SCREW	1
5	AS40806	SCREW	1	34	AS40633	THROTTLE SPRING	1
6	AS0806	SCREW	1	35	AS40634	O-RING	3
7	AS40807	BALANCER NUT	1	36	AS40635	RETAINING RING	1
8	AS40808	BALANCER WASHER	1	37	AS40636	PLATE WASHER	1
9	AS40809	ALUMINUM GEAR COVER	1	38	AS40637	RUBBER WASHER	1
10	AS40810	BALL BEARING	1	39	AS40638	SCREW	2
11	AS40811	SCREW	3	40	AS40640	REGULATOR	1
12	AS40812	INTERNAL GEAR	1	42	AS40645	PUSH ROD	1
13	AS40813	SCREW	5	46	AS40648	VALVE BODY BUSHING	1
14	AS40814	MOTOR HOUSING	1	47	AS40647	MUFFLER	1
15	AS40815	SCREW	1	48	AS40648	MUFFLER ELEMENT	1
16-19	AS40816	ENDPLATE AND GEAR ASSEMBLY	1	49	AS40649	MOTOR COVER	1
20	AS40620	ROTOR SHAFT	1	50	AS40650	SCREW	2
21	AS40619	BALL BEARING	1	51	AS40651	LEVER BRACKET	1
22	AS40620	SHIM	2	52	AS40852	LEVER	1
23	AS40621	ROTOR	1	53	AS40653	BOLT	1
24	AS40622	SET SCREW	1	54	AS40854	NUT	1
25	AS40623	ROTOR BLADE	5	55	AS40655	VALVE LEVER	1
26	AS40624	BALL BEARING	1	56	AS40656	LEVER JAM NUT	1
27	AS40625	BEARING SHIELD	1	57	AS40657	HOSE ADAPTER	1
28	AS40626	CYLINDER	1	58	AS40658	HANDLE	1
29	AS40627	PIN	1				