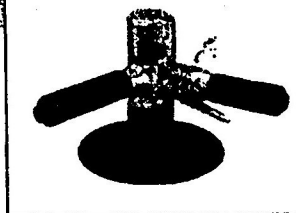
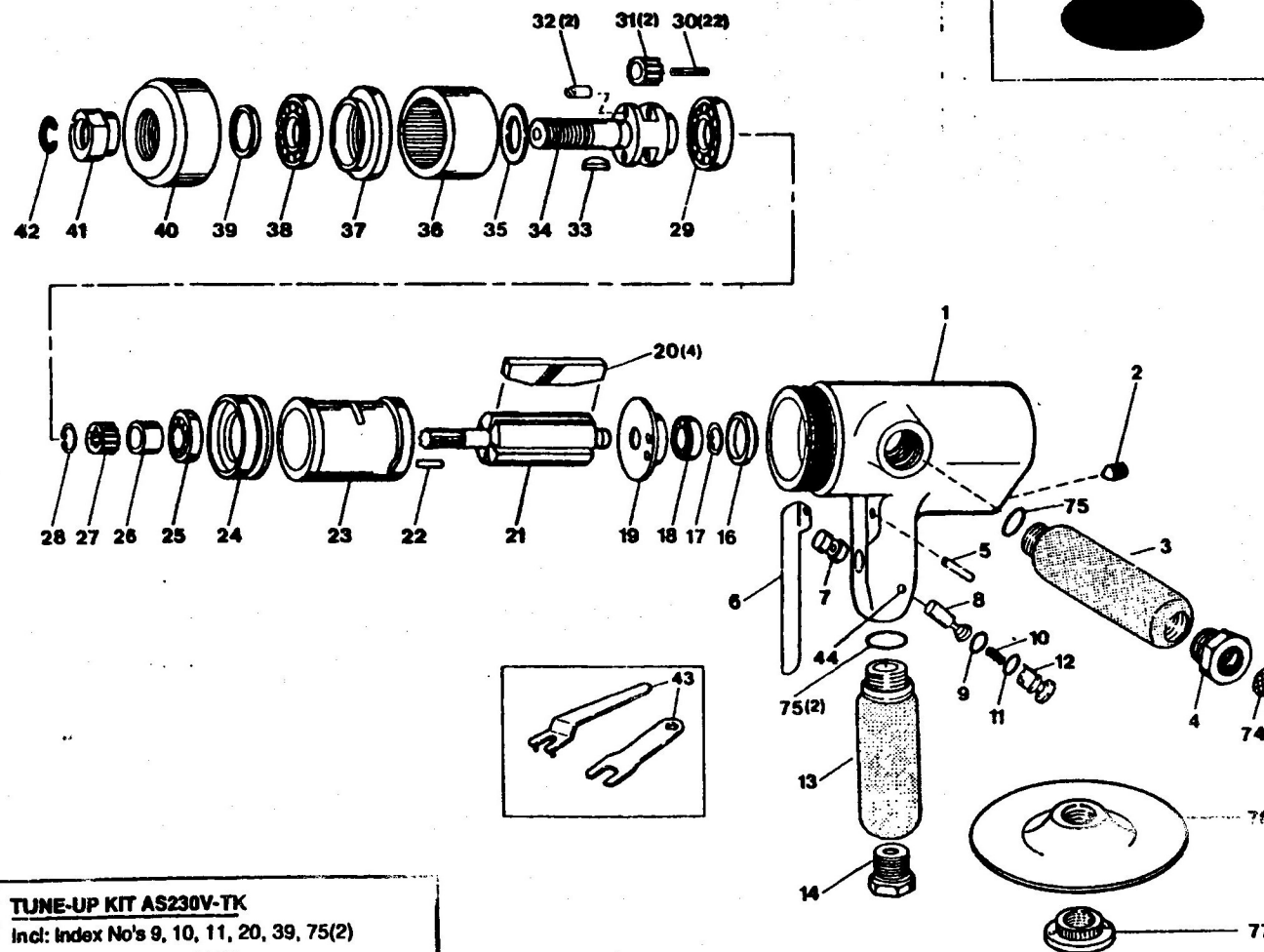


AS 230V 7" VERTICAL AIR SANDER

EXPLODED VIEW



INDEX	PART NO.	DESCRIPTION	QTY.
1	AS230V-01	Motor Housing	1
2	AS230V-02	Oil Plug	1
3	AS230V-03	Exhaust Handle	1
4	AS230V-04	Muffler Bushing	1
5	AR133-02	Throttle Lever Pin	1
6	AR134-05	Throttle Lever	1
7	AR134-06	Valve Bushing	1
8	AR134-07	Throttle Valve	1
9	AR134-08	Throttle Valve O-Ring	1
10	AR134-09	Throttle Valve Spring	1
11	AR134-10	Regulator O-Ring	1
12	AR134-11	Air Regulator	1
13	AS230V-13	Inlet Handle	1
14	AR134-01	Inlet Bushing	1
16	AS230V-16	Bearing Cap	1
17	AS230V-17	Rotor Retaining Ring	1
18	AR133-18	Rear Rotor Ball Bearing	1
19	AS230V-19	Rear End Plate	1
20	AS230V-20	Rotor Blade	4
21	AS230V-21	Rotor	1
22	AS230V-22	Dowel Pin	1
23	AS230V-23	Cylinder	1
24	AS230V-24	Front End Plate	1
25	AR133-18	Front Rotor Ball Bearing	1
26	AS230V-26	Rotor Collar	1
27	AS230V 27	Pinion	1
28	AS230V-17	Rotor Retaining Ring	1
29	AS230V-29	Rear Planet Cage Ball Bearing	1
30	AS230V-30	Needle Roller	22
31	AS230V-31	Planet Gear	2
32	AS230V-32	Planet Gear Pin	2
33	AS230V-33	Woodruff Key	1
34	AS230V-34	Planet Cage	1
35	AS230V-35	Planet Cage Spacer	1
36	AS230V-36	Internal Gear	1
37	AS230V-37	Bearing Case	1
38	AS230V-38	Front Planet Cage Ball Bearing	1
39	AS230V-39	Clamp Nut Oil Seal	1
40	AS230V-40	Clamp Nut	1
41	AS230V-41	Planet Cage Nut Collar	1
42	AS230V-42	Nut Collar Retaining Ring	1
43	AS230V-43	Spanner Wrench	2
44	AW145-016	Regulator Stop Pin	1
74	AD527-39	Screen	1
75	AS707-06	O-Ring	2
76	AS717-79	7" Backing Pad	1
77	AS717-80	Pad Nut	1

TUNE-UP KIT AS230V-TK
 Incl: Index No's 9, 10, 11, 20, 39, 75(2)
REPAIR KIT AS230V-RK
 Incl: Index No's 9, 10, 11, 20, 30, 31, 39, 75(2)

"WARNING"

1. Wear safety goggles when using this tool.
2. Make sure RPM rating of accessories equals or exceeds RPM rating tool.
3. Make sure pad related tool parts are securely tightened before operating tool.
4. Do not put additional pressure on the machine.
5. Continued exposure to vibration may cause injury to your hands and arms.
6. Disconnect tool when not in use.

The types and specifications may be changed with or without notice. 8812