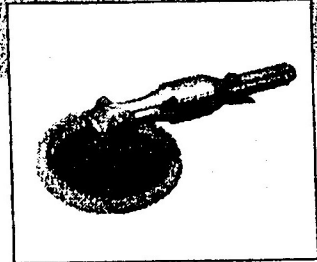
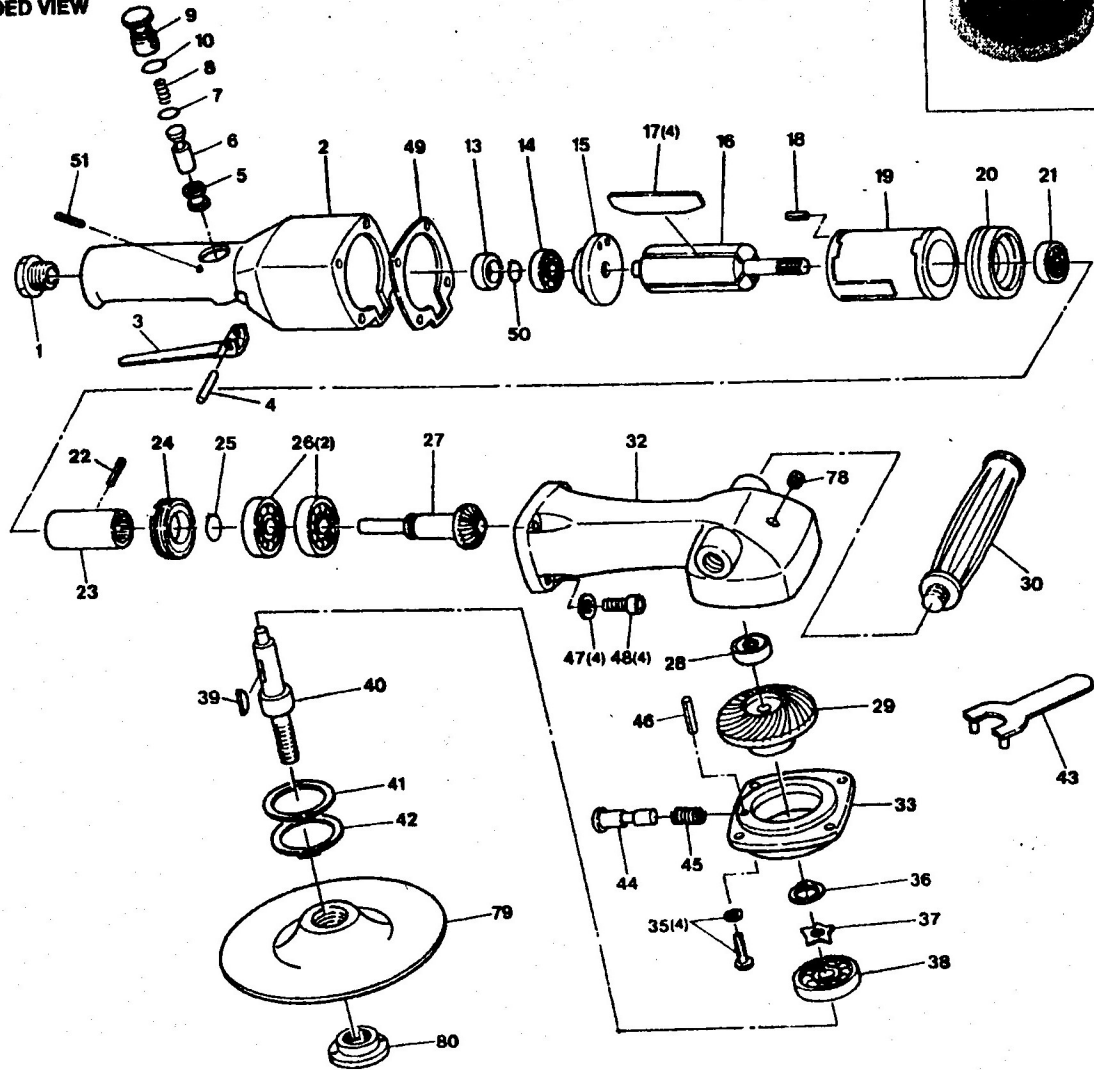


# AP720 8" ANGLE HEAD POLISHER



## EXPLODED VIEW



### "WARNING"

1. Wear safety goggles when using this tool.
2. Make sure RPM rating of accessories equals or exceeds RPM rating tool.
3. Make sure pad related tool parts are securely tightened before operating tool.
4. Do not put additional pressure on the machine.
5. Continued exposure to vibration may cause injury to your hands and arms.
6. Disconnect tool when not in use.

INDEX	PART NO.	DESCRIPTION	QTY.
1	AS717-01	Inlet Bushing	1
2	AS717-02	Motor Housing Assy Incl:(5)	1
3	AR134-05	Throttle Lever	1
4	AR133-02	Lever Pin	1
5	AR134-06	Valve Bushing	1
6	AR134-07	Valve Stem	1
7	AR134-08	"O" Ring	1
8	AR134-09	Spring	1
9	AS717-03	Air Regulator	1
10	AR134-10	"O" Ring	1
13	AS230V-16	Bearing Cap	1
14	AR133-18	Ball Bearing	1
15	AS230V-19	Rear End Plate	1
16	AS230V-21	Rotor	1
17	AS230V-20	Rotor Blade	4
18	AS230V-22	Dowel Pin	1
19	AS230V-23	Cylinder	1
20	AS230V-24	Front End Plate	1
21	AR133-18	Ball Bearing	1
22	AW138-32	Roll Pin	1
23	AS717-04	Coupling	1
24	AS717-05	Clamp Nut	1
25	AS717-06	Retaining Ring	1
26	AD527-12	Ball Bearing	2
27	AP720-01	Pinion	1
28	AS717-08	Needle Bearing	1
29	AP720-02	Gear	1
30	AS717-10	Dead Handle	1
32	AS717-11	Angle Housing	1
33	AS717-12	Lock Ring	1
35	AS707-45	Screw & Washer	1
36	AS717-13	Retaining Ring	4
37	AS717-14	Washer	1
38	AS717-15	Ball Bearing	1
39	AS707-30	Key	1
40	AS717-16	Spindle	1
41	AS717-17	Washer	1
42	AS717-18	Retaining Ring	1
43	AS707-54	Spanner Wrench	1
44	AS707-58	Stopper Pin	1
45	AS707-59	Spring	1
46	AS717-19	Roll Pin	1
47	AW145-046	Lock Washer	4
48	AS717-20	Screw Cap	4
49	AS717-21	Motor Housing Gasket	1
50	AS230V-17	Retaining Ring	1
51	ADG200-10	Roll Pin	1
78	AD500AH-42	Grease Fitting	1
79	AS717-79	7" Backing Pad	1
80	AS717-80	Pad Nut	1

The types and specifications may be changed with or without notice. 0003