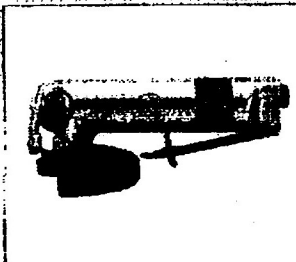
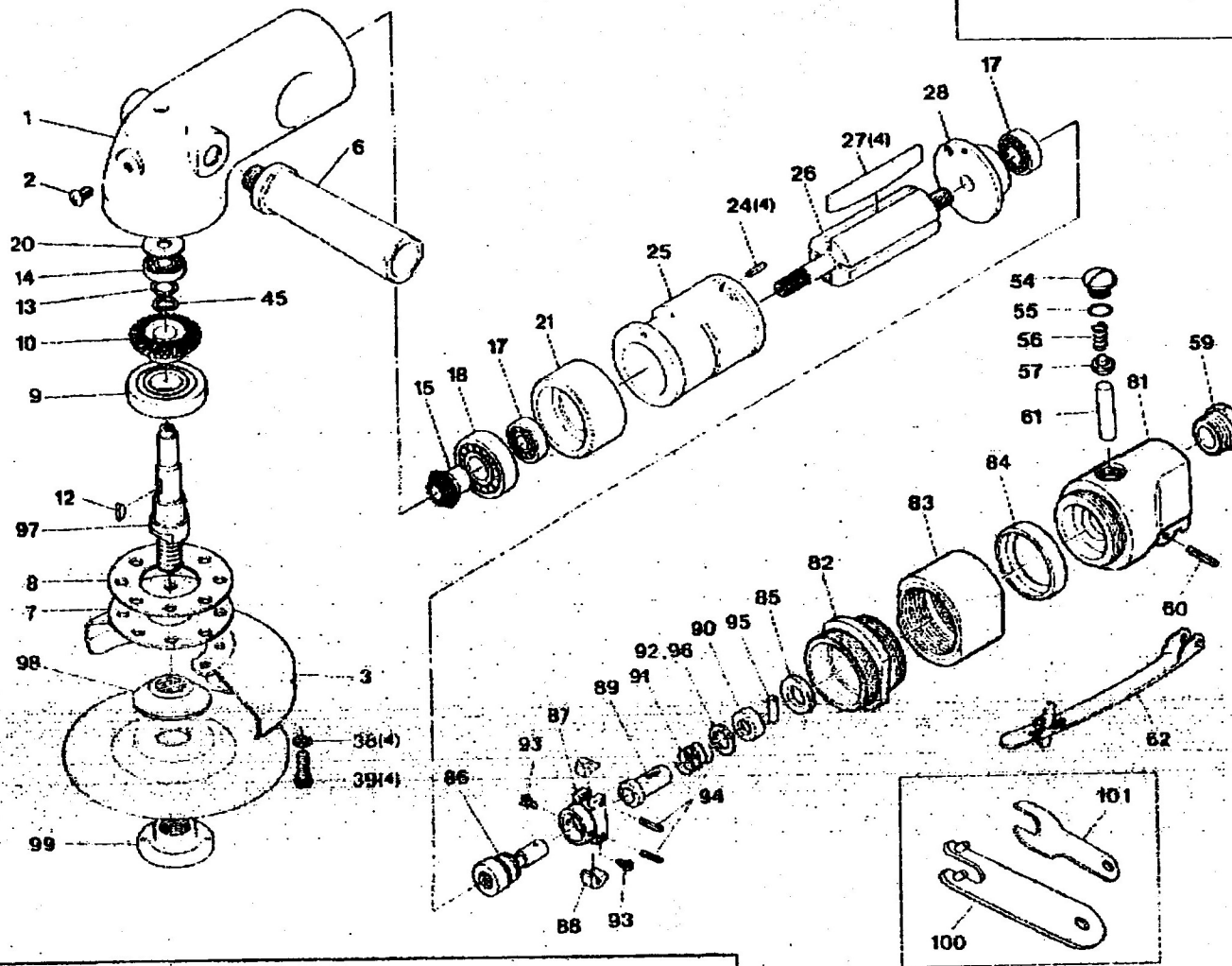


AG4500B 4-1/2" ANGLE DISC GRINDER

AL AIR TOOLS



EXPLODED VIEW



"WARNING"

1. Wear safety goggles when using this tool.
2. Make sure RPM rating of accessories equals or exceeds RPM rating tool.
3. Make sure pad related tool parts are securely tightened before operating tool.
4. Do not put additional pressure on the machine.
5. Continued exposure to vibration may cause injury to your hands and arms.
6. Disconnect tool when not in use.

| INDEX | PART NO. | DESCRIPTION | QTY. |
|-------|-------------|--------------------|-------|
| 1 | AG4500A-01 | Body | 1 |
| 2 | AG4500A-02 | Screw | 1 |
| 3 | AG4500A-03 | Disc Cover | 1 |
| 6 | AG4500A-06 | Grip | 1 |
| 7 | AG4500A-07 | Retainer | 1 |
| 8 | AG4500A-08 | Gasket | 1 |
| 9 | AG4500A-09 | Bearing | 1 |
| 10 | AG4500A-10 | Bevel Gear | 1 |
| 12 | AG4500A-12 | Key | 1 |
| 13 | AG4500A-13 | Ret. Ring | 1 |
| 14 | AR780-12 | Bearing | 1 |
| 15 | AG4500A-15 | Pinion | 1 |
| 17 | AG4500A-17 | Bearing | 2 |
| 18 | AG4500A-18 | Bearing | 1 |
| 20 | AG4500A-20 | Spacer | 1 |
| 21 | AG4500A-21 | Front Plate | 1 |
| 24 | AS230V-22 | Spring Pin | 1 |
| 25 | AS290V-23 | Cylinder | 4 |
| 26 | AG4500A-26 | Rotor | 1 |
| 27 | AS230V-20 | Rotor Blade | 1 |
| 28 | AS230V-19 | Rear Case | 4 |
| 38 | AW145-046 | Washer | 1 |
| 39 | AG4500A-39 | Screw | 4 |
| 42 | AG4500A-42 | Disc Wrench | 4 |
| 45 | AG4500A-45 | Wave Washer | 1 |
| 54 | AG4500A-54 | Valve Nut | 1 |
| 55 | AD527-30 | "O" Ring | 1 |
| 56 | AG4500A-56 | Bushing | 1 |
| 57 | AG4500A-57 | Valve Ball | 1 |
| 59 | AG4500A-59 | Bushing | 1 |
| 60 | AG4500A-60 | Pin | 1 |
| 61 | AG4500A-61 | Valve Pin | 1 |
| 62 | AG4500A-62 | Throttle Lever | 1 |
| 81 | AG4500A-81 | Valve Housing | 1 |
| 82 | AG4500A-82 | Lock Ring | 1 |
| 83 | AG4500A-83 | Coupling | 1 |
| 84 | AG4500A-84 | Spacer | 1 |
| 85 | AG4500A-85 | Governor Sheat | 1 |
| 88 | AG4500A-88 | Governor Shaft | 1 |
| 87 | AG4500A-87 | Governor | 1 |
| 88 | AG4500A-88 | Pendulum | 1 |
| 89 | AG4500A-89 | Governor Sleeve | 1 |
| 90 | AG4500A-90 | Washer | 1 |
| 91 | AG4500A-91 | Adjust Spring | 1 |
| 92 | AG4500A-92 | Adjust Ring(0.5mm) | (0-2) |
| 93 | AW135-07 | Set Screw | 2 |
| 94 | ADG206-02 | Spring Pin | 2 |
| 95 | AG4500A-95 | Pin | 1 |
| 98 | AG4500A-98 | Adjust Ring | (0-2) |
| 97 | AG4500B-97 | Gear Shaft | 1 |
| 98 | AG4500B-98 | Disc Receiver | 1 |
| 99 | AG4500B-99 | Disc Nut | 1 |
| 100 | AS707-54 | Pin Spanner | 1 |
| 101 | AG4500B-101 | Stop Spanner | 1 |

The types and accessories may be changed without notice.