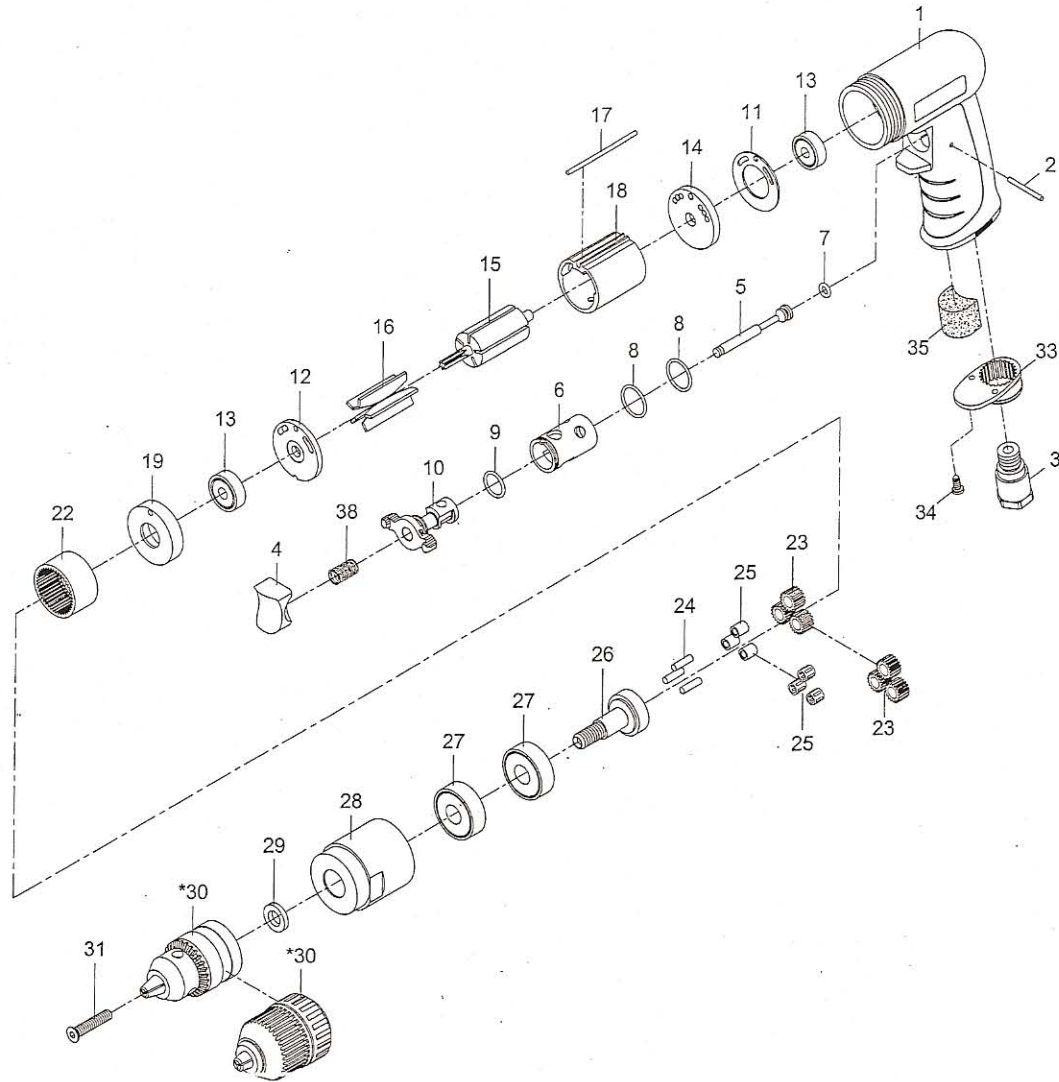


**PARTS BREAKDOWN FOR 3/8" REVERSIBLE DRILLS - MODEL ADQP380 / ADQP381**



Index No.	Parts No.	Description	Index No.	Parts No.	Description
1	ADQP380-01	Motor Housing	19	ADQP380-19	Front End Plate
2	ADQP380-02	Pin (2.5x26.8)	22	ADQP380-22	Internal Gear
3	ADQP380-03	Air Inlet	23	ADQP380-23	Planet Gear (3)
4	ADQP380-04	Trigger	24	AD54025	Pin (3) (4x13.8)
5	ADQP380-05	Valve Stem	25	ADQP380-25	Bushing (3)
6	ADQP380-06	Valve Bushing	26	ADQP380-26	Work Spindle
7	ADQP380-07	O-Ring (4.47x1.78)	27	AD54027	Ball Bearing (2) (6201z)
8	ADQP380-08	O-Ring (2) (15.5x1.5)	28	ADQP380-28	Clamp Nut
9	AD54017	O-Ring (12x1.5)	29	ADQP380-29	Washer
10	ADQP380-10	Reverse Lever	*30	AD54031	Key Chuck (3/8")
11	AD54007	Motor Gasket	*30	ADQP381-30	Keyless Chuck (3/8")
12	AD54008	End Plate	31	ADQP380-31	Screw (M5x25)
13	AD54006	Ball Bearing (2) (626zz)	33	ADQP380-33	Exhaust Diffuser
14	ADQP380-14	Rear End Plate	34	ADQP380-34	Screw (2) (TS2.9)
15	AD54011	Rotor	35	AWQP120-47	Damping Diffuser
16	ADQP380-16	Rotor Blades (5)	38	ADQP380-38	Valve Spring
17	ADQP380-17	Pin (2.5x57)			
18	ADQP380-18	Cylinder			