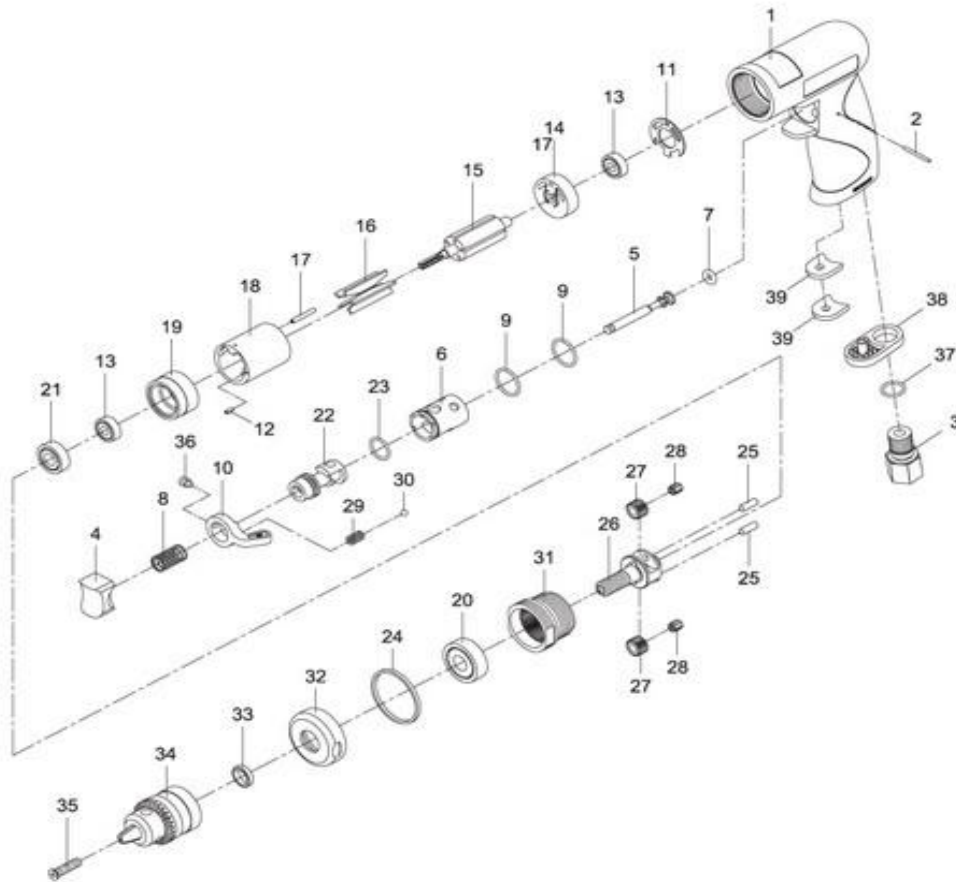


# INSTRUCTION MANUAL FOR 1/4" REVERSIBLE DRILL - MODEL ADC1400



Index No.	Parts No.	Description	Index No.	Parts No.	Description
1	ADC1400-01	Motor Housing	21	AD1400-21	Ball Bearing (698zz)
2	ADC1400-02	Pin (2x22.8)	22	ADC1400-22	Reverse Valve
3	ADC1400-03	Air Inlet	23	ADC1400-23	O-Ring (12x1.5)
4	ADC1400-04	Trigger	24	ADC1400-24	Decoration Ring
5	ADC1400-05	Valve Stem	25	AD1400-25	Pin (2) (3.97x10.8)
6	ADC1400-06	Valve Bushing	26	ADC1400-26	Cage
7	ADC1400-07	O-Ring (4.5x2.5)	27	ADC1400-27	Planet Gear (2)
8	ADC1400-08	Valve Spring	28	ADC1400-28	Needle Bearing (2) (4x5.5x6.5)
9	ADQP380-08	O-Ring (2) (15.5x1.5)	29	ADC1400-29	Spring
10	ADC1400-10	Reverse Lever	30	AGQP50M-30	Steel Ball (3/32")
11	ADC1400-11	Motor Gasket	31	AD1400-31	Internal Gear
12	AWQP120M-27	Spring Pin (1.5x4)	32	AD1400-32	Clamp Nut
13	AGQP50M-13	Ball Bearing (2) (696zz)	33	AD1400-33	Washer
14	ADC1400-14	Rear End Plate	34	AD1400-34	1/4" Key Chuck & Key (1/4")
15	AD1400-15	Rotor	35	ADC1400-35	Screw (L M5x25)
16	AD1400-16	Rotor Blades (5)	36	ADC1400-36	Set Screw (M4x5)
17	AGQP50M-21	Spring Pin (2x15)	37	ARQP380-11	O-Ring (10.7x1.5)
18	ADC1400-18	Cylinder	38	ADC1400-38	Exhaust Diffuser
19	ADC1400-19	Front End Plate	39	ADC1400-39	Damping Material (2)
20	AD1400-20	Ball Bearing (6000zz)			