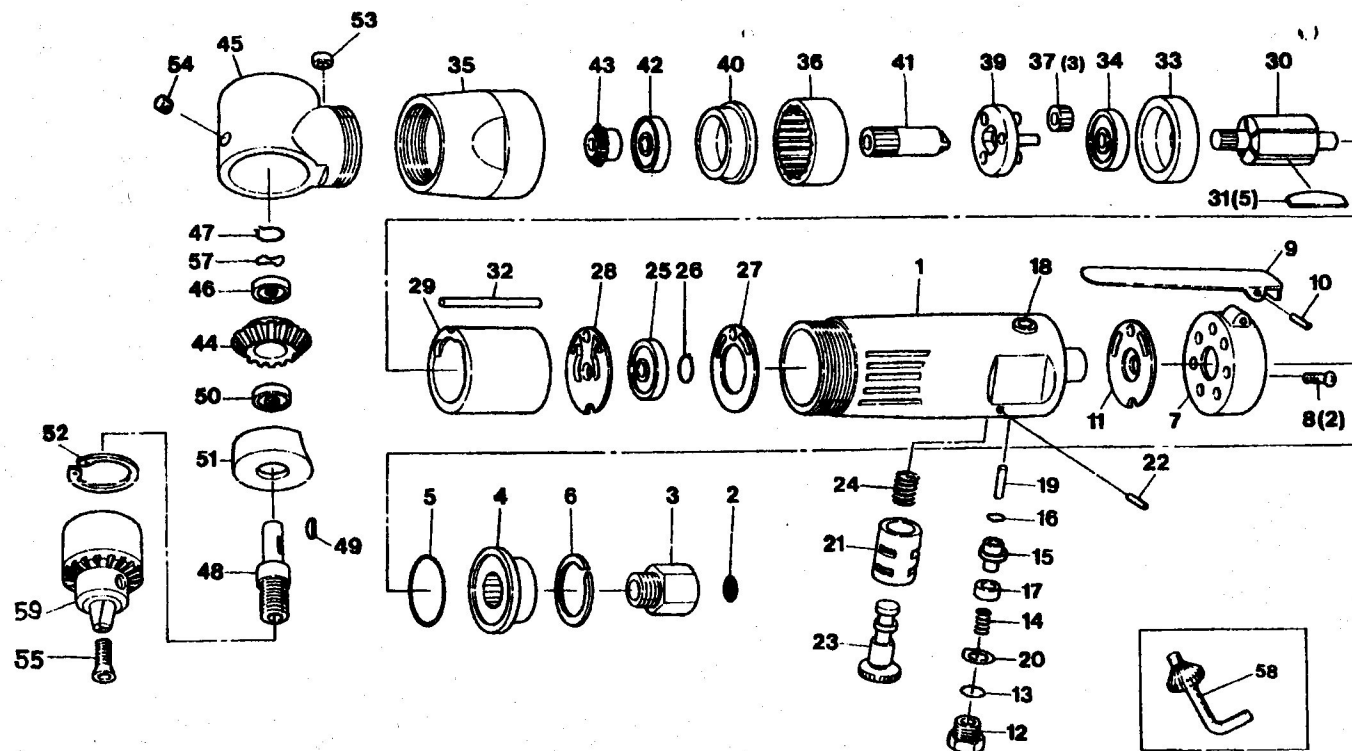
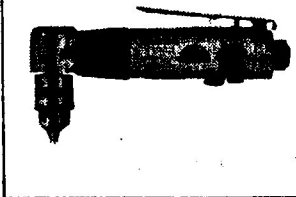


AD510AH 3/8" REVERSIBLE ANGLE DRILL

MAC AIR TOOLS

EXPLODED VIEW



INDEX	PART NO.	DESCRIPTION	QTY.
1	AD510AH-01	Motor Housing (includes =18 & 21)	1
2	AD527-39	Screen	1
3	AD510AH-03	Inlet Bushing	1
4	AGS450-11	Deflector	1
5	AGS450-39	O-Ring	1
6	AGS450-12	Deflector Stop Ring	1
7	AD510AH-07	Housing Cap	1
8	AD510AH-08	Screw	2
9	AD510AH-09	Throttle Lever	1
10	AR133-02	Spring Pin	1
11	AD510AH-11	Housing Gasket	1
12	AD510AH-12	Valve Screw	1
13	AR133-06	Valve Screw O-Ring	1
14	AR133-07	Throttle Valve Spring	1
15	AR133-08	Throttle Valve	1
16	AR133-09	Throttle Valve O-Ring	1
17	AW145-004	O-Ring Retainer	1
18	AD510AH-18	Valve Bushing (included in =1)	1
19	AD510AH-19	Throttle Plunger	1
20	AD510AH-20	Reverse Retainer	1
21	AD510AH-21	Reverse Bushing (included in =1)	1
22	AD510AH-22	Spring Pin	1
23	AD510AH-23	Reverse Valve	1
24	AD510AH-24	Reverse Valve Spring	1
25	AR133-11	Rotor Ball Bearing	1
26	AW135-51	Rotor Retainer Ring	1
27	AD527-35	Motor Gasket	1
28	AD527-18	Rear End Plate	1
29	AD527-21	Cylinder	1
30	AD510AH-30	Rotor	1
31	AD527-20	Rotor Blade	5
32	AD527-22	Motor Pin	1
33	AD510AH-33	Front End Plate	1
34	AR133-18	Rotor Ball Bearing	1
35	AD510AH-35	Lock Ring	1
36	AD510AH-36	Internal Gear	1
37	AD510AH-37	Planet Gear	3
39	AD510AH-39	Planet Cage With Pin	1
40	AD510AH-40	Ball Bearing Case	1
41	AD510AH-41	Spindle Shaft	1
42	AD511-16	Ball Bearing	1
43	AD510AH-43	Pinion	1
44	AD510AH-44	Gear	1
45	AD510AH-45	Angle Housing (includes =53)	1
46	AR133-11	Ball Bearing	1
47	AW135-51	Retainer Ring	1
48	AD510AH-48	Spindle	1
49	AD510AH-49	Key	1
50	ADG210-11	Ball Bearing	1
51	AD510AH-51	Ball Bearing Cap	1
52	AS150-41	Retainer Ring	1
53	AD500AH-42	Ball Cap (included in =45)	1
54	AD527-24	Set Screw	1
55	SDG205D-21	Chuck Screw	1
57	AD510AH-57	Wave Washer	1
58	AD511-32	Chuck Key	1
59	AD511-28	3/8" Drill Chuck (Option)	1

"WARNING"

1. Wear safety goggles when using this tool.
2. Start tool only when bit contacts work surface.
3. Never use air drill chuck beyond rated capacity.
4. Select a drill bit of proper size, sharp.
5. Never use an air drill as a grinder. It's not built to withstand the side thrust.
6. Disconnect tool when not in use.

The types and specifications may be changed with or without notice.