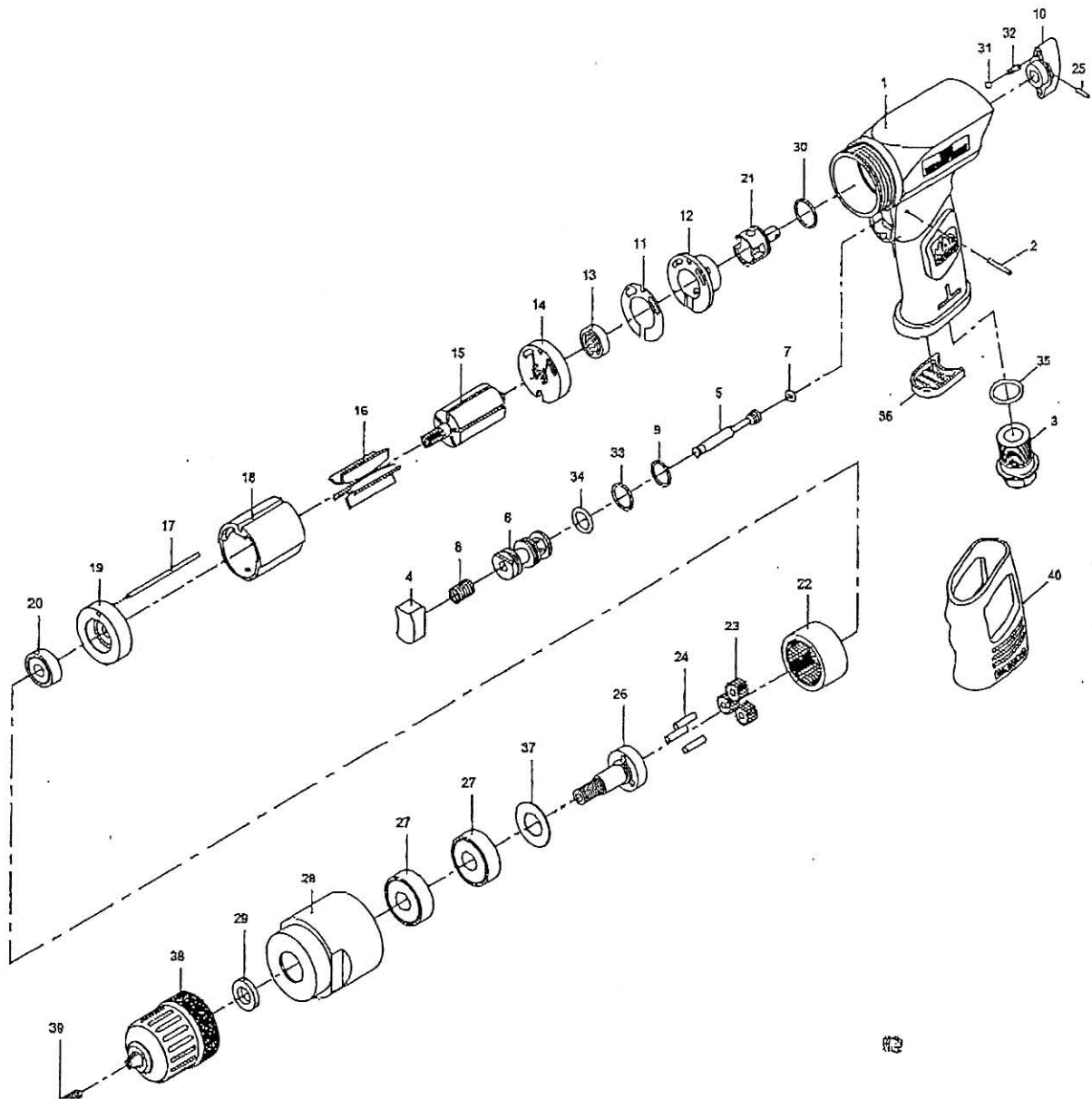


PARTS BREAKDOWN FOR 3/8" REVERSIBLE DRILL - MODEL AD3800K



Index No.	Parts No.	Description	Index No.	Parts No.	Description
1	AD3800K-01	Motor Housing	21	AD3800K-21	Reverse Valve
2	AD3800K-02	Spring Pin (Ø2.5x22L)	22	AD3800K-22	Internal Gear
3	AD3800K-03	Air Inlet	23	AD3800K-23	Idle Gear (3)
4	AD3800K-04	Trigger	24	AD3800K-24	Pin (3) (Ø4x15.8L)
5	AD3800K-05	Valve Shaft	25	AD3800K-25	Spring Pin (Ø2.5x10L)
6	AD3800K-06	Valve Bushing	26	AD3800K-26	Work Spindle
7	AD3800K-07	O-Ring (Ø3.8xØ1.9)	27	AD3800K-27	Ball Bearing (2) (6201z)
8	AD3800K-08	Valve Spring	28	AD3800K-28	Clamp Nut
9	AD3800K-09	O-Ring (Ø13.5xØ1.5)	29	AD3800K-29	Washer
10	AD3800K-10	Reverse Valve Knob	30	AD3800K-30	O-Ring (Ø15.5xØ1.5)
11	AD3800K-11	Gasket	31	AD3800K-31	Steel Ball (1/8")
12	AD3800K-12	Reverse Valve Case	32	AD3800K-32	Spring
13	AD3800K-13	Ball Bearing (626)	33	AD3800K-33	O-Ring (Ø14.5xØ1.5)
14	AD3800K-14	Rear End Plate	34	AD3800K-34	O-Ring (Ø11.8xØ2.4)
15	AD3800K-15	Rotor	35	AD3800K-35	O-Ring (Ø15.8xØ2.4)
16	AD3800K-16	Rotor Blade (5)	36	AD3800K-36	Deflector
17	AD3800K-17	Pin (Ø3/32"x60L)	37	AD3800K-37	Washer
18	AD3800K-18	Cylinder	38	AD3800K-38	Light Duty Keyless Chuck (3/8")
19	AD3800K-19	Front End Plate	39	AD3800K-39	Chuck Screw (L, M5x30L)
20	AD3800K-20	Ball Bearing (608zz)	40	AD3800K-40	Rubber Grip

AD3800K-16

2CA 77354