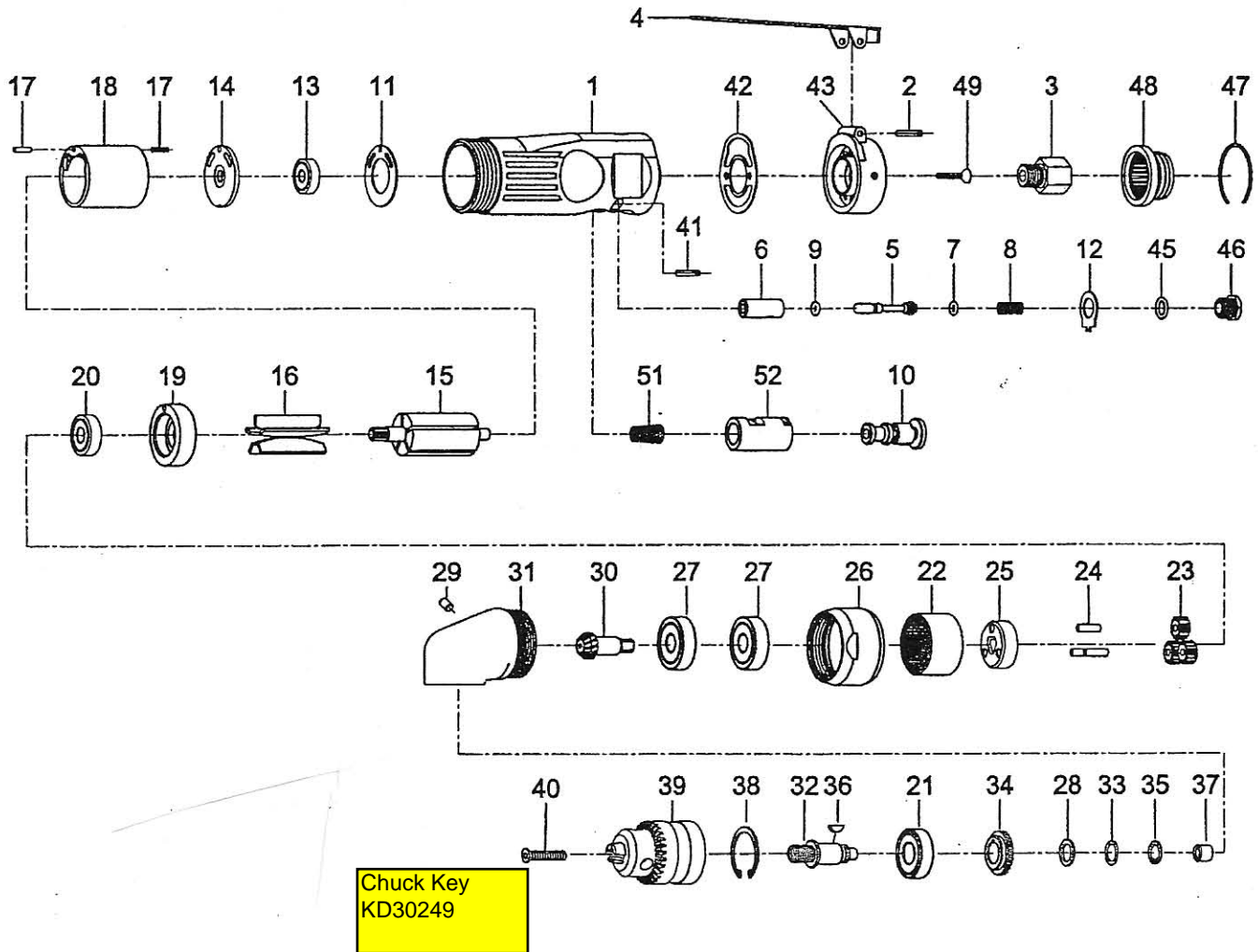


PARTS BREAKDOWN FOR 3/8" REVERSIBLE ANGLE DRILL-MODEL AD3800AH



Index No.	Parts No.	Description	Index No.	Parts No.	Description
1	AD3800AH-01	Motor Housing	26	AD3800AH-26	Lock Ring
2	AD3800AH-02	Spring Pin (Ø3*24L)	27	AD3800AH-27	Ball Bearing(2) (6200Z)
3	AD3800AH-03	Air Inlet	28	AD3800AH-28	Washer
4	AD3800AH-04	Throttle Lever	29	AD3800AH-29	Oil Cap
5	AD3800AH-05	Valve Stem	30	AD3800AH-30	Pinion
6	AD3800AH-06	Valve	31	AD3800AH-31	Angle Housing
7	AD3800AH-07	O-Ring (Ø3.9*Ø1.9)	32	AD3800AH-32	Spindle
8	AD3800AH-08	Spring	33	AD3800AH-33	Wave Washer (WW-10)
9	AD3800AH-09	O-Ring (Ø2*Ø1.5)	34	AD3800AH-34	Gear
10	AD3800AH-10	Reverse Lever	35	AD3800AH-35	Retaining Ring (ISTW-10)
11	AD54007	Motor Gasket	36	AD3800AH-36	Key
12	AD3800AH-12	Reverse Retainer	37	AD3800AH-37	Bushing
13	AD54006	Ball Bearing (626ZZ)	38	AD3800AH-38	Retaining Ring (RTW-28)
14	AD54008	End Plate	39	AD54031	Key Chuck 3/8" (3/8")
15	AD3800AH-15	Rotor	40	AD54032	Screw (L M5*0.8P)
16	AD54012	Rotor Blades (5)	41	AD3800AH-41	Spring Pin (Ø3*18L)
17	AD54009	Spring Pin (2) (Ø2.5*10L)	42	AD3800AH-42	Rear Gasket
18	AD3800AH-18	Cylinder	43	AD3800AH-43	Rear Cover
19	AD3800AH-19	Front End Plate	45	AD3800AH-45	O-Ring (P8)
20	AD3800AH-20	Ball Bearing (608ZZ)	46	AD3800AH-46	Throttle Valve Plug
21	AD3800AH-21	Ball Bearing (6001ZZ)	47	AD3800AH-47	Retaining Ring (Ø1.2*Ø35)
22	AD3800AH-22	Internal Gear	48	AD3800AH-48	Exhaust Deflector
23	AD3800AH-23	Planet Gear (3)	49	AD3800AH-49	Screw (2) (M3*15L)
24	AD54025	Pin (3) (Ø4*13.8L)	51	AD3800AH-51	Spring
25	AD3800AH-25	Cage	52	AD3800AH-52	Reverse Bushing