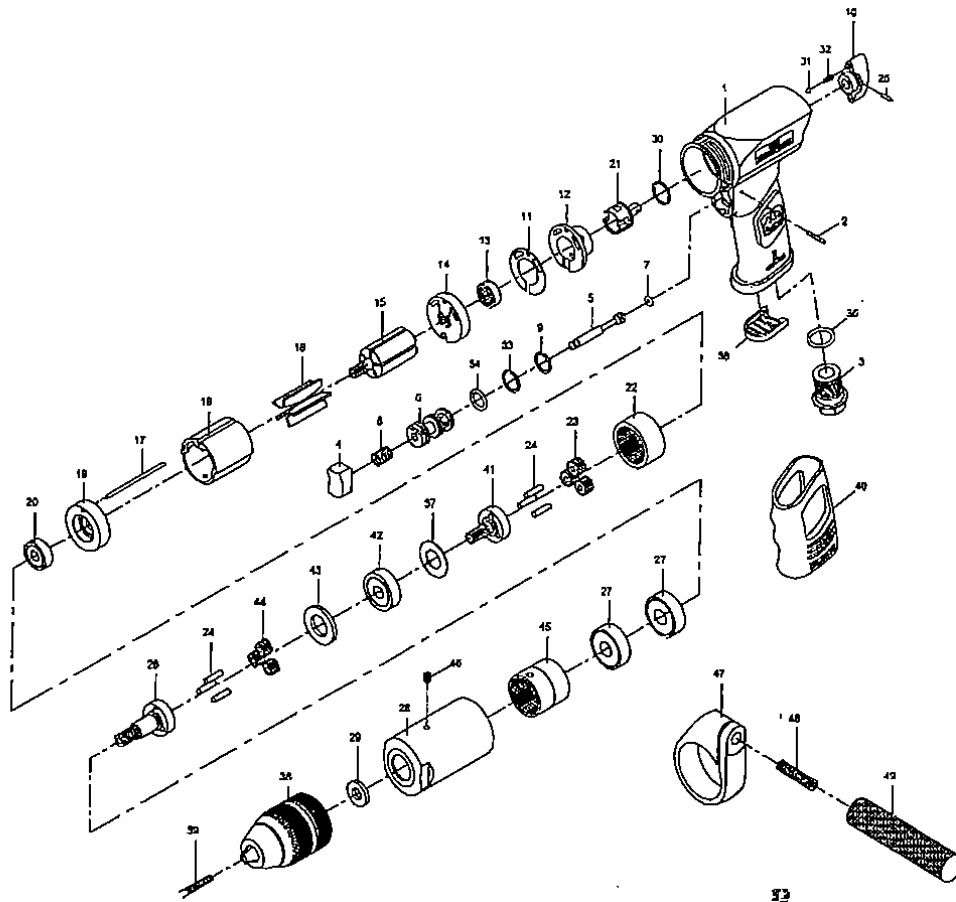


PARTS BREAKDOWN FOR 1/2" REVERSIBLE DRILL - MODEL AD1200K



Index No.	Parts No.	Description	Index No.	Parts No.	Description
1	AD3800K-01	Motor Housing	26	AD3800K-26	Work Spindle
2	AD3800K-02	Spring Pin (Ø2.5x22L)	27	AD3800K-27	Ball Bearing (2) (6201z)
3	AD3800K-03	Air Inlet	28	AD1200K-28	Clamp Nut
4	AD3800K-04	Trigger	29	AD1200K-29	Washer
5	AD3800K-05	Valve Shaft	30	AD3800K-30	O-Ring (Ø15.5xØ1.5)
6	AD3800K-06	Valve Bushing	31	AD3800K-31	Steel Ball (1/8")
7	AD3800K-07	O-Ring (Ø3.8xØ1.9)	32	AD3800K-32	Spring
8	AD3800K-08	Valve Spring	33	AD3800K-33	O-Ring (Ø14.5xØ1.5)
9	AD3800K-09	O-Ring (Ø13.5xØ1.5)	34	AD3800K-34	O-Ring (Ø11.8xØ2.4)
10	AD3800K-10	Reverse Valve Knob	35	AD3800K-35	O-Ring (Ø15.8xØ2.4)
11	AD3800K-11	Gasket	36	AD3800K-36	Deflector
12	AD3800K-12	Reverse Valve Case	37	AD3800K-37	Washer
13	AD3800K-13	Ball Bearing (626)	38	AD1200K-38	Light Duty Keyless Chuck (1/2")
14	AD3800K-14	Rear End Plate	39	AD1200K-39	Chuck Screw (L M5x35L)
15	AD3800K-15	Rotor	40	AD3800K-40	Rubber Grip
16	AD3800K-16	Rotor Blade (5)	41	AD1200K-41	Reduction Spindle (6200z)
17	AD3800K-17	Pin (Ø3/32"x80L)	42	AD1200K-42	Ball Bearing (6202z)
18	AD3800K-18	Cylinder	43	AD1200K-43	Washer
19	AD3800K-19	Front End Plate	44	AD1200K-44	Idle Gear (3)
20	AD3800K-20	Ball Bearing (808zz)	45	AD1200K-45	Internal Gear
21	AD3800K-21	Reverse Valve	46	AD1200K-46	Set Screw (M5x6L)
22	AD3800K-22	Internal Gear	47	AD1200K-47	Retainer
23	AD3800K-23	Idle Gear (3)	48	AD1200K-48	Set Screw (M8x35L)
24	AD3800K-24	Pin (6) (Ø4x15.8L)	49	AD1200K-49	Handle
25	AD3800K-25	Spring Pin (Ø2.5x10L)			